

Electronic Version with
updates to July 9, 2015

Beijing
CHINA
12-16 July
2015

80TH
ANNIVERSARY

IMPS

Conference
PROGRAM



CONTENTS



Welcome	1
Schedule	2-11
Keynotes	12
Invited Speakers	12
Invited Symposia	13
Contributed Symposia.....	13
Program Events	14-15
Group Photo	14
Welcome to Beijing Poster Session Reception	14
Closing Reception & Banquet Dinner	14
Excursion Trip	14-15
General Conference Information	16-18
Information for Presenters	16
Internet Access.....	17
Campus Life/Beijing Info/Tips	18
Committees	19
Floor Plans.....	20-22
Walking Map	23
Notes.....	24-25

WELCOME

Dear Attendee:

As local organizers of this year's International Meeting of the Psychometric Society (IMPS), we cordially welcome you to Beijing, China, and the campus of Beijing Normal University.

The city of Beijing, which was founded 3,000 years ago, is the capital of China. It is the political, economic, academic, and cultural center of the country. Tradition and modern civilization are well integrated in this beautiful city. BNU is conveniently located between the second and third ring of the city, and the campus is beautiful and ideal for hosting an international conference. We think you'll agree that it provides an excellent setting for our annual meeting.

The conference will occur at three facilities on campus: Jingshi Hotel, which will be the site of conference meetings and the location for conference registration; Yingdong Conference Hall, which will host our plenary sessions; and Jingshi Xuetang, which will be another venue for oral presentations.

The main conference will run from July 13 through July 16. It will begin at 8:20 a.m. on Monday July 13 in the Yingdong Conference Hall, with an opening ceremony and keynote address. It will end with a full day excursion on Thursday, July 16, to the Great Wall and Summer Palace. Conference sessions will take place through the day on Monday, Tuesday, and Wednesday.

Pre-conference Chinese short courses will be held on July 11 and English short courses on July 12. These will be full-day short courses covering wide topics of methodological and statistical issues in psychology, education, and related areas.

While you're in Beijing, we hope you will take time to enjoy the city's beauty, old and young, full of attractions. It is our sincere wish that you will enjoy the intermingling of traditional Beijing culture and the city's impressively modern image and make the best of your time here.

Enjoy the meeting and your stay in Beijing!

Tao Xin Hongyun Liu
Co-Local Organizers for the 2015 IMPS meeting



中国基础教育质量监测协同创新中心
Collaborative Innovation Center of Assessment
toward Basic Education Quality
CICA-BEQ



北京師範大學
心理學院

SUNDAY, JULY 12

7:45 a.m.-12:00 noon
07:45-12:00

HL Conference Registration Open

8:30 a.m.-9:30 a.m.
08:30-09:30

H6-F Refreshment Break

9:00 a.m.-11:30 a.m.
09:00-11:30

H2 Editorial Council Meeting

9:00 a.m.-5:10 p.m.
09:00-17:10

Pre-Conference Workshops

H6 *Li Cai and R. J. Wirth: flexMIRT: Flexible multilevel multidimensional item analysis and test scoring*

H1 *Simon Wood: Generalized additive mixed models in R*

H5 *Elizabeth A. Stuart: Recent advances in the estimation of causal effects: Focus on propensity scores*

10:30 a.m.-10:50 a.m.
10:30-10:50

H6-F Refreshment Break

11:30 a.m.-1:00 p.m.
11:30-13:00

HD2 Editorial Council & BoT Luncheon

12:20 p.m.-1:45 p.m.
12:20-13:45

HD1 Workshop Attendee Luncheon

3:00 p.m.-3:30 p.m.
15:00-15:30

H6-F Refreshment Break

1:00 p.m.-5:00 p.m.
13:00-17:00

H2 Board of Trustee (BoT) Meeting

24-hour to 12-hour time conversion

24-hour time (e.g., 06:00)

0	1	2	3	4	5	6	7	8	9	10	11	12
---	---	---	---	---	---	---	---	---	---	----	----	----

a.m.

12	1	2	3	4	5	6	7	8	9	10	11	12
----	---	---	---	---	---	---	---	---	---	----	----	----

12-hour time (e.g., 6:00 a.m.)

24-hour time (e.g., 16:00)

12	13	14	15	16	17	18	19	20	21	22	23
----	----	----	----	----	----	----	----	----	----	----	----

p.m.

12	1	2	3	4	5	6	7	8	9	10	11
----	---	---	---	---	---	---	---	---	---	----	----

12-hour time (e.g., 4:00 p.m.)

MONDAY, JULY 13

7:00 a.m.- 5:00 p.m.
07:00-17:00

HL Conference Registration Open

7:00 a.m.-5:00 p.m.
07:00-17:00

YM Speaker Practice Room Open

7:50 a.m.-8:10 a.m.
07:50-08:10

SH* Session Chair/Moderator & Volunteers Training

8:20 a.m.-8:35 a.m.
08:20-08:35

SH* Welcome & Opening

8:35 a.m.-9:35 a.m.
08:35-09:35

SH* Keynote Speaker: Houcan Zhang
Psychometrics in China: History and its development
Chair: Hua-Hua Chang

9:40 a.m.-10:00 a.m.
09:40-10:00

Group Photo
Main Building – Jingshi Square

10:00 a.m.-10:30 a.m.
10:00-10:30

YH-F, H6-F, XH-F Refreshment Breaks

Parallel Sessions, Monday AM

10:30 a.m.-12:00 noon
10:30-12:00

YH Invited Symp. *Detecting Cheating on Tests*,
Chair: Wim J. van der Linden

Arianto Wibowo: Incorporating suspicious answer changes in the detection of aberrant response patterns

~~Vincent Kieftenbeld: Resiliency of automated scoring models to gaming~~

Dmitry I. Belov: Detection of item preknowledge in a high-stakes test

Wim J. van der Linden: Exact null and posterior distributions for the detection of cheating

Xi Wang: Detecting candidate preknowledge of items using a predictive checking method

10:30 a.m.-12:00 noon
10:30-12:00

Y3 Symp. *New Developments in Network Psychometrics*,
Chair: Denny Borsboom

Denny Borsboom: The factor-analytic disease: Etiology, diagnosis, and treatment

Claudia van Borkulo: A new method for construction networks from binary data

Riet van Bork: Latent variable and network model implications for (partial) correlation structures.

Sacha Epskamp: Residual interaction modeling: Unifying SEM and network modeling

SH* is the Student Activity Center. Allow at least 15 minutes to walk there from the Jingshi Hotel, and follow the directions of guides wearing orange baseball caps.

Yingdong Conference Hall: (Y)

(YL) Main Lobby Entrance	(YH) Lecture Hall (2nd Floor)	(YH-F) 2nd Floor Foyer Area	(Y2) Conference Room 2 (2nd Floor)	(YM) Mini Meeting Room (2nd Floor)	(Y3) Conference Room 3 (3rd Floor)
--------------------------	-------------------------------	-----------------------------	------------------------------------	------------------------------------	------------------------------------

Jingshi Hotel: (H)

(HL) Hotel Lobby (1st Floor)	(HD1) Dining Room 1 (1st Floor)	(HD2) Dining Room 2 (2nd Floor)	(H6) Room 6 (3rd Floor)
------------------------------	---------------------------------	---------------------------------	-------------------------

MONDAY, JULY 13

10:30 a.m.-12:00 noon
10:30-12:00

H6 Equating in IRT, Chair: Young-Sun Lee

Björn Andersson: An observed-score equating framework for latent variable models with polytomous data

Stella Kim: Composition of common items for equating with mixed-format tests

Jinghua Liu: Selection of equating samples when the test taking population changes

Huijuan Meng: An empirical investigation of item response time stability among equating items

Jonathan Weeks: Developing a multi-dimensional vertical scale of reading for understanding

10:30 a.m.-12:00 noon
10:30-12:00

H1 Large-Scale Assessment, Chair: Claus Carstensen

Yue (Helena) Jia: Statistical projection through multidimensional latent regression: Linking between large scale educational survey assessments

Xiaying Zheng: Using sample weights in item response data analysis under complex sample designs

Rongchun Zhu: Impact of item cluster position on parameter estimation using an international assessment

10:30 a.m.-12:00 noon
10:30-12:00

H5 Longitudinal Models, Chair: Marco Alfó

Steven M. Boker: Fitting multi-timescale differential equation models of adaptive equilibrium regulation

Yueqin Hu: Dynamic process for ordinal data: Latent differential equation modeling with threshold

Noémi Schuurman: Measurement error, reliability and stability in multilevel autoregressive modeling

Satoshi Usami: Inferring longitudinal relationships between variables: Model selection between the latent change score and autoregressive cross-lagged factor models

Chuyi Yu: Piecewise latent growth modeling with random change-point

MONDAY, JULY 13

10:30 a.m.-12:00 noon
10:30-12:00

XH Cognitive Diagnosis Models I, Chair: Gongjun Xu

Bor-Chen Kuo: A cognitive diagnosis model using multiple category scoring for constructed response items

Jung Yeon Park: Bayesian model checking methods for cognitive diagnosis models

Kevin Carl Santos: Detecting aberrant examinees in cognitive diagnosis models

Yan Sun: A general nonparametric classification method for cognitive diagnosis

Chih-Wei Yang: An extended multiple-strategy DINA model for strategy estimation

10:30 a.m.-12:00 noon
10:30-12:00

X3 Model Fit/Selection in IRT, Chair: Andries van der Ark

Johan Braeken: Towards effect size measures for local item dependence

Yunxiao Chen: Latent variable model selection for binary response data with application in educational and psychiatric data

Seungwon Chung: Limited information goodness-of-fit testing of IRT models in the presence of planned missing data

Zhen Li: Summed score likelihood based statistics for detecting latent variable distribution fit in full-information item bifactor models

Dandan Liao: Model fit evaluation in multi-level-multidimensional item response models: Sensitivity to model misspecification

10:30 a.m.-12:00 noon
10:30-12:00

X7 Statistical Inference, Chair: Jingchen Liu

Xin Gu: Approximate Bayes factor for informative hypotheses

Clemens Draxler: Some thoughts concerning the influence of nuisance parameters on conditional inference

Pieter M. Kroonenberg: The use of deviance plots for non-nested model selection in loglinear models, structural equations, and three-mode analysis

Yang Liu: Generalized fiducial inference for graded response models

12:00 noon-1:30 p.m.
12:00-13:30

Attendee Luncheon*
Northwestern Restaurant
*Advanced ticketed event

Jingshi Hotel: (H)

(H6-F) 3rd Floor Foyer Area (H5) Room 5 (3rd Floor) (H2) Room 2 (3rd Floor) (H1) Room 1 (3rd Floor)

Jingshi Xuetaang: (X)

(XH) Jingshi Hall (1st Floor) (XH-F) 1st Floor Foyer Area (X3) The 3rd Room (B1 Floor) (X-B1) Lobby (B1 Floor) (X7) The 7th Room (3rd Floor)

MONDAY, JULY 13

Parallel Sessions, Monday PM

1:30 p.m.-3:00 p.m.
13:30-15:00

H6 *Response Time Models*,
Chair: Gunter Maris

Maria Bolsinova: Modeling conditional dependence between response time and accuracy

Hyeon-Ah Kang: Online calibration for a joint model of responses and response times in CAT

Abhisek Saha: Bayesian analysis of joint modeling of response times with dynamic latent ability

Stijn Verdonck: D*M estimation: Convolving choice RT data and decision model distributions to factor out non-decision time

Ingmar Visser: The general linear ballistic accumulator model

1:30 p.m.-3:00 p.m.
13:30-15:00

H1 *Ordinal & Mixed Responses in IRT*,
Chair: Yi Zheng

Jiao Can: Comparison of exposure controls, item pool characteristics, and stopping rules for CAT using the generalized partial credit model

Ebru Demircioglu: An investigative study of LR and DFIT methods using GGUM model: An analysis of differential item function assessment of polytomous items

Claus H. Carstensen: Incorporating different response formats of competence tests in an IRT model

Weiwei Cui: Evaluating dimensionality in mixed-format tests using a multidimensional IRT approach

Yujin Kang: Comparison of unidimensional IRT calibration and equating methods for mixed-format tests

1:30 p.m.-3:00 p.m.
13:30-15:00

H5 *Classification & Latent Distributions*,
Chair: Tim Moses

Elena A. Erosheva: Fast approximate mixed membership inference with rank data

Robert Hillen: A critical review of taxometrics: Why taxometrics is unsuited for psychological data

Satoshi Watanabe: Taxon separation using the bootstrap

Young Koung Kim: A method of estimating test score distributions by item sampling

Hannah Oosterhuis: Standard errors for norm statistics

MONDAY, JULY 13

1:30 p.m.-3:00 p.m.
13:30-15:00

YH Invited Symp. *Publication Trade Secrets: Straight from the Publishers' Mouths*,
Chair: Jimmy de la Torre

Kurt Geisinger: *Applied Measurement in Education*

Hua-Hua Chang: *Applied Psychological Measurement*

Matthias von Davier: *British Journal of Mathematical and Statistical Psychology*

Willem Heiser: *Journal of Classification*

Li Cai: *Journal of Educational and Behavioral Statistics*

Jimmy de la Torre: *Journal of Educational Measurement*

Paul De Boeck: *Measurement: Interdisciplinary Research and Perspectives*

Irini Moustaki: *Psychometrika*

1:30 p.m.-3:00 p.m.
13:30-15:00

Y3 *Validity, Generalizability, & Scoring*,
Chair: Denny Borsboom

Keith Markus: Degrees of test validity: Some new simulation results

Joseph H. Grochowalski: Component universe score profile analysis: A new method of profile analysis

Yon Soo Suh: Optimal measurement procedures in generalizability theory

Kohei Uno: Clustered factor score identification in matrix-factorization factor analysis

Jinming Zhang: Random or mixed-effect models should be used in generalizability theory

3:00 p.m.-3:30 p.m.
15:00-15:30

YH-F, H6-F Refreshment Breaks

3:30 p.m.-4:15 p.m.
15:30-16:15

Invited Speakers: Francis Tuerlinckx, Xiangdong Yang, Elizabeth Stuart

YH Francis Tuerlinckx: *Bridging psychology and psychometrics: Three case studies*
Chair: Han van der Maas

H6 Xiangdong Yang: *Toward an explanatory scale of cognitively designed algebra story problems*
Chair: Klaas Sijtsma

Y3 Elizabeth A. Stuart: *Propensity score methods in the context of covariate measurement error*
Chair: Anders Skrondal

4:30 p.m.-6:30 p.m.
16:30-18:30

XH Welcome Reception & Poster Session

Yingdong Conference Hall: (Y)

(YL) Main Lobby Entrance	(YH) Lecture Hall (2nd Floor)	(YH-F) 2nd Floor Foyer Area	(Y2) Conference Room 2 (2nd Floor)	(YM) Mini Meeting Room (2nd Floor)	(Y3) Conference Room 3 (3rd Floor)
--------------------------	-------------------------------	-----------------------------	------------------------------------	------------------------------------	------------------------------------

Jingshi Hotel: (H)

(HL) Hotel Lobby (1st Floor)	(HD1) Dining Room 1 (1st Floor)	(HD2) Dining Room 2 (2nd Floor)	(H6) Room 6 (3rd Floor)
------------------------------	---------------------------------	---------------------------------	-------------------------

TUESDAY, JULY 14

7:00 a.m.-5:00 p.m.
07:00-17:00

HL Conference Registration Open

7:00 a.m.-5:00 p.m.
07:00-17:00

YM Speaker Practice Room Open

Parallel Sessions, Tuesday AM

8:00 a.m.-9:30 a.m.
08:00-09:30

YH Symp. Psychometric Issues in Large Scale Assessment in the International Context,

Chairs: Tao Xin, Changhua Rich

Tao Xin: Setting standards toward the quality of Chinese compulsory education

Dongmei Li: Different growth measures on different vertical scales

Xin Li: A Chinese longitudinal study: Growth modeling with value-added interpretations

Danhui Zhang: An investigation of the impact of extracurricular learning on student science achievement in China

Xiaohong Gao: Generalizability of assessing school accountability under matrix sampling

8:00 a.m.-9:30 a.m.
08:00-09:30

Y3 Mixture/Latent Class Models,
Chair: Yui Fai Yung

Hye-Jeong Choi: An application of a random mixture nominal item response model in a latent transition analysis for investigating instruction effects

Depeng Jiang: Program evaluation with multilevel and multivariate longitudinal outcomes

Wen Luo: Impact of misspecified turning points on heterogeneous growth trait estimation

Yoon Soo Park: Mixture higher-order diagnostic classification model with covariates

Jesper Tijmstra: Person-mixture item-response models for Likert scale data

8:00 a.m.-9:30 a.m.
08:00-09:30

H6 Invited Symp. Handling Missing Data in Psychometrics,
Chair: Anders Skrondal

Victoria Savalei: Treating item-level missing data in SEMs when indicators are parcels

Irini Moustaki: Modeling missing values in cross-national surveys: A latent variable approach

Cees Glas: Missing data in IRT models

Joost van Ginkel: A simulation study on the performance of multiple imputation using regression with optimal scaling

Anders Skrondal: Simple tests of Missing At Random (MAR) in multilevel models

TUESDAY, JULY 14

8:00 a.m.-9:30 a.m.
08:00-09:30

H1 Model Selection & Model Averaging,
Chair: Clemens Draxler

Wicher Bergsma: Regression modeling with I-priors

David Kaplan: Bayesian model averaging over directed acyclic graphs with implications for prediction in structural equation modeling

Meereem Kim: Model selection in random item mixture IRT model

Huiping Wu: Bayesian analysis of dichotomous latent trait models

Zijun Ke: Testing autocorrelations: Comparing the standard asymptotic method and resampling techniques

8:00 a.m.-9:30 a.m.
08:00-09:30

H5 Reliability, Chair: Won-Chan Lee

Klaas Sijtsma: Reliable and precise measurement: Caveats and a research agenda

Pieter Ruben Oosterwijk: Factors causing reliability underestimation of coefficient alpha

Eva A. O. Zijlmans: Estimation methods for single-item reliability

Terry Ackerman: Evaluation of five reliability estimates under multidimensional test scenarios

Seohyun Kim: A structural equation modeling approach to estimation of reliability for a test with items having different numbers of ordered categories

8:00 a.m.-9:30 a.m.
08:00-09:30

XH Computerized Adaptive Testing,
Chair: Kyung (Chris) Han

Chia-Wen Chen: A quick item selection method in computerized adaptive testing for ranking items

Ya-Hui Su: Investigation of constraint-weighted item selection procedures in polytomous CAT

Xiaoou Li: Nearly optimal computerized adaptive testing for mastery test

Xiuzhen Mao: The application of restrictive stochastic item selection methods in multidimensional computerized adaptive testing

Shiyu Wang: Sequential design for computerized adaptive testing that allows for response revision

Jingshi Hotel: (H)

(H6-F) 3rd Floor Foyer Area (H5) Room 5 (3rd Floor) (H2) Room 2 (3rd Floor) (H1) Room 1 (3rd Floor)

Jingshi Xuetaang: (X)

(XH) Jingshi Hall (1st Floor) (XH-F) 1st Floor Foyer Area (X3) The 3rd Room (B1 Floor) (X-B1) Lobby (B1 Floor) (X7) The 7th Room (3rd Floor)

TUESDAY, JULY 14

8:00 a.m.-9:30 a.m. 08:00-09:30	<p>X3 <i>Choice/Comparative Response Data</i>, Chair: Mark deRoosj</p> <p>Duncan K. H. Fong: A Bayesian multinomial probit model for the analysis of choice data</p> <p>Yin Lin: Item parameters in forced-choice personality assessments: Does context in which items appear matter?</p> <p>Tour Liu: An investigation of enhancement of ability estimation using a nested logit model for multiple-choice items</p> <p>Safir Yousfi: Optimal assembly of forced-choice questionnaires</p> <p>Gökhan Kumlu: Comparing pairwise comparison and rank-order judgments scaling of teacher competences</p>
8:00 a.m.-9:30 a.m. 08:00-09:30	<p>X7 <i>Standard Setting & Automated Scoring</i>, Chair: Mo Zhang</p> <p>David Thissen: Standard setting: From educational assessment to health outcomes measurement (and back?)</p> <p>Myoung Hwa Kim: Quality control of standard setting using many-faceted and diagnostic models</p> <p>Xin Luo: Adaptive body of work: A new standard setting procedure in complex exams</p> <p>Frank Rijmen: Targeting automated scoring responses for human review</p> <p>Jing Chen: Improving the effectiveness of the pre-screening filtering system of an automated essay scoring engine</p>
9:40 a.m.-10:10 a.m. 09:40-10:10	<p>YH Dissertation Prize Speaker: Michelle LaMar <i>Cognitive models for understanding student thinking in complex tasks</i> Chair: David Thissen</p>
10:10 a.m.-10:30 a.m. 10:10-10:30	<p>YH-F Refreshment Break</p>
10:30 a.m.-11:30 a.m. 10:30-11:30	<p>YH Keynote Speaker: Yutaka Kano <i>Developments in multivariate missing data analysis</i> Chair: Alberto Maydeu-Olivares</p>
11:30 a.m.-12:00 noon 11:30-12:00	<p>YH Business Meeting, Everyone Welcome Announcement of IMPS 2017, Financial Report, Elections, Other Announcements Chair: Sophia Rabe-Hesketh</p>

TUESDAY, JULY 14

12:00 noon-1:30 p.m. 12:00-13:30	<p>Attendee & Student Luncheon* Northwestern Restaurant *Advanced ticketed event</p> <p>Parallel Sessions, Tuesday PM1</p>
1:30 p.m.-3:00 p.m. 13:30-15:00	<p>YH <i>Invited Symp. Psychometrics in East Asia</i>, Chair: Wen-Chung Wang</p> <p>Tao Xin: Psychometric developments in the Chinese mainland</p> <p>Kohei Adachi: Psychometrics in Japan</p> <p>Soonmook Lee: Past and present of psychometric work in Korea</p> <p>Bor-Chen Kuo: The development of psychometrics and psychological testing in Taiwan</p>
1:30 p.m.-3:00 p.m. 13:30-15:00	<p>Y3 <i>Model Fit/Selection in SEM</i>, Chair: Hao Wu</p> <p>Ge Jiang: Small sample statistics for SEM: New corrections to the likelihood ratio statistic for nonnormal data</p> <p>Keke Lai: The problem with having two watches: Assessment of fit when RMSEA and CFI disagree</p> <p>Jiajuan Liang: Mardia's skewness and kurtosis tests for normality in covariance structure models under high dimension with a small sample size</p> <p>Alberto Maydeu-Olivares: Assessing the size of model misfit in covariance structure models</p> <p>Jelte M. Wicherts: Errors and biases in the reporting of the fit of structural equation models</p>
1:30 p.m.-3:00 p.m. 13:30-15:00	<p>H6 <i>Symp. Modeling Responses and Response Times to Psychological Tests</i>, Chair: Dylan Molenaar</p> <p>Abe Hofman: Fast versus slow multiplication strategies</p> <p>Paul De Boeck: What dependencies between response times and response accuracies can tell</p> <p>Dylan Molenaar: Response mixture modeling of responses and response times</p> <p>Gunter Maris: Response time models: All for one and one for all</p> <p>Han van der Maas: Response times in computer adaptive practice and monitoring systems</p>

Yingdong Conference Hall: (Y)

(YL) Main Lobby Entrance	(YH) Lecture Hall (2nd Floor)	(YH-F) 2nd Floor Foyer Area	(Y2) Conference Room 2 (2nd Floor)	(YM) Mini Meeting Room (2nd Floor)	(Y3) Conference Room 3 (3rd Floor)
--------------------------	-------------------------------	-----------------------------	------------------------------------	------------------------------------	------------------------------------

Jingshi Hotel: (H)

(HL) Hotel Lobby (1st Floor)	(HD1) Dining Room 1 (1st Floor)	(HD2) Dining Room 2 (2nd Floor)	(H6) Room 6 (3rd Floor)
------------------------------	---------------------------------	---------------------------------	-------------------------

TUESDAY, JULY 14

1:30 p.m.-3:00 p.m.
13:30-15:00

H1 Clustering & Classification,
Chair: Elena A. Eroshva

Jacqueline J. Meulman: COSA 2.0: Clustering objects on subsets of attributes revisited

Maria Brigida Ferraro: A general method for clustering in a reduced subspace

Melanie Wall: In search of an optimally valid criteria set for diagnosing alcohol use disorder

Mo Zhang: Classification of writing styles using keystroke logs

Mark de Rooij: The δ -machine

1:30 p.m.-3:00 p.m.
13:30-15:00

H5 IRT for Paired Samples & Longitudinal Data,
Chair: Chun Wang

Kuan-Yu Jin: Modeling global and local dependence in paired samples

Inga Schwabe: A heteroscedastic multilevel item response theory model for twin data

Stéphanie van den Berg: Psychometrics in genetics

Jenn-Yun Tein: Alternative methods of latent growth modeling for examining intervention effects

Guangjian Zhang: A comparison of dynamic factor analysis, principal component analysis, and independent component analysis for an EEG study

1:30 p.m.-3:00 p.m.
13:30-15:00

XH Linking & Data Fusion,
Chair: Jonathan Weeks

Jiyoung Jung: ~~The comparison of linking methods and different anchor test conditions in multidimensional IRT model~~
The comparison of multidimensional equating methods in correlation conditions between dimensions and different group ability in NEAT design

Katerina Marcoulides: Data integration methods and implementing IRT models for test linking: When multiple versions of a measurement tool have been administered for longitudinal child assessment

Eisuke Segawa: A comparison of calibrated projection and conventional IRT based linking

Tom F. Wilderjans: Data fusion of heterogeneous data sets: The Tucker3-PCA model as an illustrative example

Han Du: A Bayesian "fill in" method for correcting for publication bias in meta-analysis

TUESDAY, JULY 14

1:30 p.m.-3:00 p.m.
13:30-15:00

X3 Nonparametric & Nonstandard IRT,
Chair: Matthew S. Johnson

L. Andries van der Ark: Multilevel Mokken scale analysis

Samantha Bouwmeester: The sources of variance overlap between personality and behavioral measures

Yuan Sun: Derivation of logistic model from item response patterns

Seock-Ho Kim: Continuation ratio model in item response theory and selection of models for polytomous items

Yue Liu: Is the four-parameter model suited for achievement tests as well as psychological tests?

1:30 p.m.-3:00 p.m.
13:30-15:00

X7 Measurement in Practice,
Chair: Xiaoting Huang

David Stillwell: Tomorrowland: A computer adaptive measure of delay discounting

Shenghong Dong: An effectiveness comparison of IRT-based DIF detection using a scale purification procedure and a DIF-free-then-DIF strategy

Hye Kyung Lee: Multidimensional item response analysis of a number sense assessment with mathematics learning disabilities students

Mingchu Neal Luo: Development of an American standard-based instrument for assessing principal leadership: Investigating the psychometric properties of the Chinese principals' perspectives

Yue Zhao: Estimation accuracy of IRT calibration in patient-reported outcome measures with small sample sizes

3:00 p.m.-3:30 p.m.
15:00-15:30

YH-F, H6-F Refreshment Breaks

3:30 p.m.-4:15 p.m.
15:30-16:15

Invited Speakers: Li Cai, Jee-Seon Kim

YH Li Cai: *The utility of multidimensional item response models in educational assessment and evaluation studies*
Chair: Wim J. van der Linden

H6 Jee-Seon Kim: *Causal inference with observational multilevel data: Challenges & strategies*
Chair: Anders Skrondal

Jingshi Hotel: (H)

(H6-F) 3rd Floor Foyer Area (H5) Room 5 (3rd Floor) (H2) Room 2 (3rd Floor) (H1) Room 1 (3rd Floor)

Jingshi Xuetaang: (X)

(XH) Jingshi Hall (1st Floor) (XH-F) 1st Floor Foyer Area (X3) The 3rd Room (B1 Floor) (X-B1) Lobby (B1 Floor) (X7) The 7th Room (3rd Floor)

TUESDAY, JULY 14

Parallel Sessions, Tuesday PM2

4:25 p.m.-5:40 p.m.
16:25-17:40

YH Symp. *Computerized Multistage Testing: Theory and Applications*
Chair: Duanli Yan

Yi Zheng: Overview of test assembly methods in multistage testing

Duanli Yan: Routing and scoring, estimations in multistage testing

Oliver Y. Zhang: Application of multistage testing in large-scale certification examinations

Kyung (Chris) Han: Software tools for multistage testing simulations

4:25 p.m.-5:40 p.m.
16:25-17:40

Y3 *Stata IRT Software Demo*

Chuck Huber (Stata): Item response models using Stata 14

4:25 p.m.-5:40 p.m.
16:25-17:40

H6 *Sponsors Session*

Chair: Terry Ackerman

Huijuan Meng, Kyung (Chris) Han (GMAC): Quasi Linear-on-the-Fly Test (LOFT) when item parameters are not available

Matthew Gaertner (Pearson): Research and innovation at Pearson

Xiaxun Sun (ACER): Differential item functioning detection using Mantel-Haenszel procedure in ACER ConQuest

Alex Tong (ATA): The validity of scenario based testing (SST) in large-scale campus recruitment assessment

4:25 p.m.-5:40 p.m.
16:25-17:40

H5 *Non-Standard Response Types*

Chair: Fan Wallentin

Anna Brown: Thurstonian scaling of compositional questionnaire data

Merijn Mestdagh: The impact of bounded measurements on the relation between the mean and the standard deviation

Karl Schweizer: A confirmatory factor model for the investigation of cognitive data showing a ceiling effect: An example

4:25 p.m.-5:40 p.m.
16:25-17:40

XH *Cognitive Diagnosis Models II*

Chair: Ping Chen

Xiaofeng Yu: Item selection strategies based on attribute mastery probabilities in CD-CAT

Chunlei Gao : Multi-stage testing with cognitive diagnosis

Miao Gao: Comparing approaches in cognitive diagnostic computerized adaptive testing

Önder Sünbül: Evaluating performance of differential item functioning detection methods for DIF data in DINA model

TUESDAY, JULY 14

4:25 p.m.-5:40 p.m.
16:25-17:40

X3 *Rater Effects in IRT*,
Chair: Jinming Zhang

Jodi M. Casabianca: Parameter recovery and estimation of the longitudinal hierarchical rater model

Wen-Chung Wang: The multifaceted IRT Model for examinee-selected items

Zhuoran Wang: Applications of computerized adaptive testing in evaluating rater effects

Chun Wang: Adaptive rater monitoring

4:25 p.m.-5:40 p.m.
16:25-17:40

X7 *Statistical Learning*,
Chair: Melanie Wall

Jiayuan Yu: Test assembly using a quantum particle swarm optimization approach

Ying Cheng: The use of support vector machine in cognitive diagnostic assessments

Denis Larocque: Random forests for non-homogeneous zero-inflated Poisson processes

Vassilis Vasdekis: A Dantzig selector composite likelihood approach for multivariate generalised linear mixed models

Yingdong Conference Hall: (Y)

(YL) Main Lobby Entrance	(YH) Lecture Hall (2nd Floor)	(YH-F) 2nd Floor Foyer Area	(Y2) Conference Room 2 (2nd Floor)	(YM) Mini Meeting Room (2nd Floor)	(Y3) Conference Room 3 (3rd Floor)
--------------------------	-------------------------------	-----------------------------	------------------------------------	------------------------------------	------------------------------------

Jingshi Hotel: (H)

(HL) Hotel Lobby (1st Floor)	(HD1) Dining Room 1 (1st Floor)	(HD2) Dining Room 2 (2nd Floor)	(H6) Room 6 (3rd Floor)
------------------------------	---------------------------------	---------------------------------	-------------------------

WEDNESDAY, JULY 15

7:00 a.m.-3:30 p.m.
07:00-15:30

HL Conference Registration Open

7:00 a.m.-3:30 p.m.
07:00-15:30

YM Speaker Practice Room Open

Parallel Sessions, Wednesday AM

8:00 a.m.-9:30 a.m.
08:00-09:30

**YH Invited Symp. *Advances in Modeling and Analysis for Educational Testing*,
Chair: Jingchen Liu**

Gongjun Xu: Detecting aberrant behavior in standardized testing

Matthias von Davier: The effect of anchoring vignette scoring on reliability and validity

Hua-Hua Chang: From computerized adaptive testing to adaptive learning and beyond

Matthew S. Johnson: A hypothesis testing procedure for Q-matrix entries

Jingchen Liu: Regularized latent class analysis with application in cognitive diagnosis

8:00 a.m.-9:30 a.m.
08:00-09:30

**Y3 Symp. *Recent Developments in Latent Variable Models for Complex Data Structures*,
Chair: Irini Moustaki**

Paolo Giordani: Remedies for degeneracy in Candecomp/Parafac

Marco Alfo': Parsimonious representations of finite mixture models for multivariate mixed responses

Maria Francesca Marino: Dynamic, random-coefficient based, missing data models

Silvia Cagnone: A multivariate latent variable model for analysing longitudinal mixed data

Silvia Bianconcini: The latent variable ALT model: A general framework for longitudinal data

8:00 a.m.-9:30 a.m.
08:00-09:30

**H6 Item Generation/Item Banks,
Chair: Xiangdong Yang**

Dmitry I. Belov: Exploiting properties of a feasible set to improve item pool utilization

Lihong Yang: Enhancing item pool utilization for designing multistage computerized adaptive tests

Francis Smart: Crowdsourcing item generation

Ping Chen: A comparative study of online item calibration methods in multidimensional computerized adaptive testing

WEDNESDAY, JULY 15

8:00 a.m.-9:30 a.m.
08:00-09:30

Yi Zheng: Exploring online calibration of polytomous items in computerized adaptive testing

**H1 *Component & Scaling Analysis*,
Chair: Joost van Ginkel**

Shizuhiko Nishisato: Multidimensional joint graphical display: Back to the basics

Hiroki Ikemoto: Sparse core Tucker2 for computationally identifying the optimal model between parafac and Tucker2

Takashi Muramaki: Applications of principal cluster components analysis to scale development and the validation of clustering by a resampling method

Ji Hoon Ryoo: Component-based item response theory

~~Hye Won Suk: Constrained principal component analysis for functional data~~

8:00 a.m.-9:30 a.m.
08:00-09:30

**H5 *Lasso/Penalization & Trees*,
Chair: Wicher Bergsma**

Marije Fagginger Auer: Using LASSO penalization for explanatory IRT: An application on instructional covariates for mathematical performance in a large-scale assessment

Junhao Pan: An alternative to post-hoc model modification in confirmatory factor analysis: The Bayesian Lasso

Po-Hsien Huang: A penalized likelihood method for structural equation modeling with ordinal data

Xinru Li: Meta-CART: Integrating classification and regression trees into meta-analysis

Marjolein Fokkema: Detection of treatment-subgroup interactions in clustered datasets

8:00 a.m.-9:30 a.m.
08:00-09:30

**XH *Differential Item Functioning*,
Chair: Ya-Hui Su**

Can Güner: Differential item functioning in Rasch models with recent methods: An application to educational data

Jing Jiang: Anchor item selection methods in DIF analysis

Can Shao: A procedure to select more invariant items for the anchor in tests of differential item functioning

Xiuyuan Zhang: Methods to enhance small-sample DIF estimation: Implications for minimum sample size requirements and flagging rules

Jingshi Hotel: (H)

(H6-F) 3rd Floor Foyer Area (H5) Room 5 (3rd Floor) (H2) Room 2 (3rd Floor) (H1) Room 1 (3rd Floor)

Jingshi Xuetaang: (X)

(XH) Jingshi Hall (1st Floor) (XH-F) 1st Floor Foyer Area (X3) The 3rd Room (B1 Floor) (X-B1) Lobby (B1 Floor) (X7) The 7th Room (3rd Floor)

WEDNESDAY, JULY 15

8:00 a.m.-9:30 a.m. 08:00-09:30	<p>Burhanettin Özdemir: Testlet effect on IRT-based DIF methods: Bayesian testlet response theory approach</p> <p>X3 Scoring in IRT, Chair: Seock-Ho Kim</p> <p>Michael Chajewski: Helpful Bayesian inferences about examinee performances for new scale implementations</p> <p>Kyung (Chris) Han: Maximum likelihood score estimation solution for short tests and computerized adaptive tests</p> <p>Tianli Li: A transition to the theta-based scale for large scale assessments</p> <p>Ruslan Jabrayilov: Empirical comparison of classical test theory (CTT) and item response theory (IRT) in change assessment using outcome questionnaire-45 in the Dutch sample</p> <p>Qing Xie: Using a test battery for examinee classification: An empirical study</p>
8:00 a.m.-9:30 a.m. 08:00-09:30	<p>X7 Power, Non-Normality & Missing Data, Chair: Victoria Savalei</p> <p>Marjan Bakker: Flawed intuitions about power</p> <p>Ming Huo: A Monte Carlo evaluation of parametric and permutation-based methods for two-group multivariate means comparisons when parametric assumptions are violated</p> <p>Johnson Ching-Hong Li: A probability-based effect size (AG) robust to multivariate non-normality and heterogeneity of covariance matrices in one-way MANOVA</p> <p>Fan Jia: Imputation methods for missing non-normal data in structural equation modeling</p> <p>Chen-Wei Liu: A hierarchical IRT approach to item nonresponse for Likert-type scales</p>
9:30 a.m.-10:00 a.m. 09:30-10:00	<p>YH-F Refreshment Break</p>
10:00 a.m.-11:00 a.m. 10:00-11:00	<p>YH Keynote Speaker: Simon Wood <i>Modeling with smooth functions</i> Chair: Jaqueline J. Meulman</p>
11:00 a.m.-12:00 noon 11:00-12:00	<p>YH Career Award Speaker: Lawrence Hubert <i>An old tale of two computational approaches to regression: Updated for the 21st century</i> Chair: Willem Heiser</p>
12:00 noon-1:30 p.m. 12:00-13:30	<p>Attendee Luncheon* Northwestern Restaurant *Advanced ticketed event</p>

WEDNESDAY, JULY 15

1:30 p.m.-3:00 p.m. 13:30-15:00	<p>Parallel Sessions, Wednesday PM</p> <p>YH Roger E. Millsap Tribute Symposium: Perspectives on Measurement Invariance, Chairs: Paul De Boeck, Jelte Wicherts</p> <p>Oi-Man Kwok: Partial measurement invariance then and now: Methodological aspects and practical implications</p> <p>Suzanne Jak: Testing strong factorial invariance in multilevel data</p> <p>Ting Wang: Score-based tests of measurement invariance</p> <p>Hao Wu: Identifying models in invariance testing for ordered categorical data</p> <p>Jelte M. Wicherts: What we (could) learn from (failures of) measurement invariance</p>
1:30 p.m.-3:00 p.m. 13:30-15:00	<p>Y3 Multilevel IRT, Chair: Cees Glas</p> <p>Megan Kuhfeld: Multilevel item factor analysis models for group-level inferences</p> <p>Chen Li: A multilevel cross-classified polytomous item response theory (IRT) model for complex person clustering structures</p> <p>Chun Wang: Measuring multidimensional growth: A higher-order IRT perspective</p> <p>Ji Seung Yang: Multilevel item bifactor models with nonnormal latent densities</p> <p>Chanho Park: Extensions of a group-level diagnostic assessment model for practical considerations</p>
1:30 p.m.-3:00 p.m. 13:30-15:00	<p>H6 Multidimensional IRT, Chair: Johan Braeken</p> <p>Yin Wah Fiona Chan: Application of multidimensional item response theory to personality assessment</p> <p>Derya Çakici Eser: The interaction effect of the correlation between dimensions and item discrimination on parameter estimation when multidimensional data are scaled as unidimensional</p> <p>Aiden Loe: Resolving multicollinearity using a two-tier information item factor analysis model</p> <p>Yong Luo: A dual testlet response theory model that accounts for dual local item dependence</p> <p>Peida Zhan: The logistic testlet framework for within-item multidimensional testlet-effect</p>

Yingdong Conference Hall: (Y)

(YL) Main Lobby Entrance	(YH) Lecture Hall (2nd Floor)	(YH-F) 2nd Floor Foyer Area	(Y2) Conference Room 2 (2nd Floor)	(YM) Mini Meeting Room (2nd Floor)	(Y3) Conference Room 3 (3rd Floor)
--------------------------	-------------------------------	-----------------------------	------------------------------------	------------------------------------	------------------------------------

Jingshi Hotel: (H)

(HL) Hotel Lobby (1st Floor)	(HD1) Dining Room 1 (1st Floor)	(HD2) Dining Room 2 (2nd Floor)	(H6) Room 6 (3rd Floor)
------------------------------	---------------------------------	---------------------------------	-------------------------

WEDNESDAY, JULY 15

1:30 p.m.-3:00 p.m.
13:30-15:00

H1 Estimation Methods,
Chair: *Silvia Cagnone*

Lianne Ippel: Estimating multi-level models in data streams

Zhenqiu (Laura) Lu: Evaluating t-distribution and sandwich robust methods for level-1 outliers in hierarchical linear models

Xin Tong: Growth curve modeling for non-normal data: A two-stage robust approach versus a semiparametric Bayesian approach

Miao Yang: Robust moderation analysis using a two-level regression model

Shaobo Jin: Some aspects of selecting polychoric instrumental variables for a confirmatory factor analysis model with ordinal data

1:30 p.m.-3:00 p.m.
13:30-15:00

H5 Response Processes/Styles,
Chair: *Francis Tuerlinckx*

Daniel Bolt: Using the asymmetry of item characteristic curves (ICCs) to learn about underlying item response processes

Kensuke Okada: Bayesian estimation in hybrid multidimensional item response model

Sien Deng: An investigation of rating scale heterogeneity in ecological momentary assessment (EMA) data

Lale Khorramdel-Ameri: Validation and optimization of a new IRT approach for measuring response styles using external variables

Yiyun Shou: Implication of thresholds noninvariance in cross-cultural studies

1:30 p.m.-3:00 p.m.
13:30-15:00

XH Cognitive Diagnosis Models III,
Chair: *Matthias von Davier*

Hans-Friedrich Köhn: A procedure for assessing the completeness of the Q-matrices of cognitively diagnostic tests

Ren Liu: Validating attribute structures in the attribute hierarchy method for making diagnostic inferences

Xiang Liu: Bayesian inferences of the Q-matrix with an unknown number of attributes

Susu Zhang: Effects of low latent class base rate and high item CTT difficulties on CD-CAT classification accuracy and efficiency under the DINO model

Yu Bao: Power analysis of item-level interactions in a general diagnostic classification model framework

WEDNESDAY, JULY 15

1:30 p.m.-3:00 p.m.
13:30-15:00

X3 Mediation & Causality,
Chair: *David Kaplan*

Ying Yuan: Bayesian dynamic mediation analysis

Wai Chan: The analysis of mediated moderation using VS

Baojuan Ye : Estimating the confidence interval of the traditional mediation effect size using the delta method

Jiangang Xia: Using the multilevel comparative interrupted time series method to evaluate the impacts of U.S. national No Child Left Behind policy on school-level decision-making

Mo Ching Magdalena Mok: Interplay of achievements in mathematics and Chinese language: A six-year longitudinal study

1:30 p.m.-3:00 p.m.
13:30-15:00

X7 Computer-Based Assessment,
Chair: *Michelle LaMar*

Usama Ali: Item analysis for non-traditional item types in scenario-based assessments

Chen-Huei Liao: A preliminary result of collaborative problem solving assessment in Taiwan

Sangbeak Ye: Sequential learning detection with response times

3:00 p.m.-3:25 p.m.
15:00-15:25

YH-F Refreshment Break

3:25 p.m.-4:10 p.m.
15:25-16:10

YH Early Career Award Speaker: Sy-Miin Chow
Fitting and evaluating dynamical systems models: Current techniques and unresolved challenges
Chair: *Shizuhiko Nishisato*

4:10 p.m.-5:10 p.m.
16:10-17:10

YH Presidential Address: Sophia Rabe-Hesketh
Ignoring non-ignorable missingness
Chair: *Terry Ackerman*

5:10 p.m.-6:00 p.m.
17:10-18:00

YH Awards Ceremony & Closing:
Chair: *Terry Ackerman*

7:00 p.m.-9:30 p.m.
19:00-21:30

Closing Reception & Banquet Dinner
Jingshi Hotel, 1st and 2nd Floor Dining Halls

THURSDAY, JULY 16

7:00 a.m.-6:30 p.m.
07:00-18:30

IMPS 2015 Social Excursion
Meet in the Jingshi Hotel Lobby to load shuttle buses between 7:00 a.m. and 7:55 a.m. (07:00-07:55). Buses will depart by 8:00 a.m. (08:00) sharp! (See Excursion for further details and timeline.)

Jingshi Hotel: (H)

(H6-F) 3rd Floor Foyer Area (H5) Room 5 (3rd Floor) (H2) Room 2 (3rd Floor) (H1) Room 1 (3rd Floor)

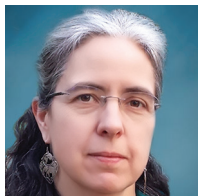
Jingshi Xuetaang: (X)

(XH) Jingshi Hall (1st Floor) (XH-F) 1st Floor Foyer Area (X3) The 3rd Room (B1 Floor) (X-B1) Lobby (B1 Floor) (X7) The 7th Room (3rd Floor)

KEYNOTES



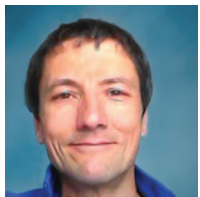
Houcan Zhang
Beijing Normal University, China
PSYCHOMETRICS IN CHINA:
HISTORY AND ITS DEVELOPMENT
13 July 2015, 8:35 a.m.-9:35 a.m.
(08:35-09:35)



Michelle LaMar
Educational Testing Service, USA
2015 Psychometric Society
Dissertation Prize
COGNITIVE MODELS FOR UNDER-
STANDING STUDENT THINKING IN
COMPLEX TASKS
14 July 2015, 9:40 a.m.-10:10 a.m.
(09:40-10:10)



Yutaka Kano
Osaka University, Japan
DEVELOPMENTS IN MULTIVARIATE
MISSING DATA ANALYSIS
14 July 2015, 10:30 a.m.-11:30 a.m.
(10:30-11:30)



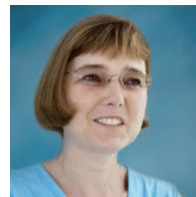
Simon Wood
University of Bath, UK
MODELING WITH SMOOTH
FUNCTIONS
15 July 2015, 10:00 a.m.-11:00 a.m.
(10:00-11:00)



Lawrence Hubert
University of Illinois at Urbana -
Champaign, USA
2015 Psychometric Society Career
Award for Lifetime Achievement
AN OLD TALE OF TWO COMPUTATIONAL
APPROACHES TO REGRESSION: UPDATED
FOR THE 21ST CENTURY
15 July 2015, 11:00 a.m.-12:00 noon
(11:00-12:00)



Sy-Miin Chow
Pennsylvania State University, USA
2015 Psychometric Society
Early Career Award
FITTING AND EVALUATING
DYNAMICAL SYSTEMS MODELS:
CURRENT TECHNIQUES AND
UNRESOLVED CHALLENGES
15 July 2015, 3:25 p.m.-4:10 p.m.
(15:25-16:10)

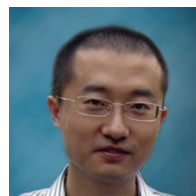


Sophia Rabe-Hesketh
University of California, Berkeley, USA
Presidential Address: IGNORING
NON-IGNORABLE MISSINGNESS
15 July 2015, 4:10 p.m.-5:10 p.m.
(16:10-17:10)

INVITED SPEAKERS



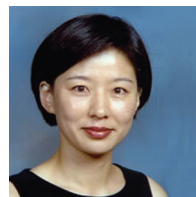
Francis Tuerlinckx
KU Leuven, Belgium
BRIDGING PSYCHOLOGY AND PSYCHO-
METRICS: THREE CASE STUDIES
13 July 2015, 3:30 p.m.-4:15 p.m.
(15:30-16:15)



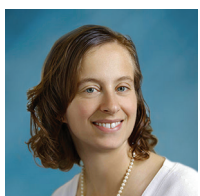
Li Cai
University of California, Los Angeles, USA
THE UTILITY OF MULTIDIMENSIONAL
ITEM RESPONSE MODELS IN EDUCA-
TIONAL ASSESSMENT AND EVALUATION
STUDIES
14 July 2015, 3:30 p.m.-4:15 p.m.
(15:30-16:15)



Xiangdong Yang
East China Normal University, Shanghai,
China
TOWARD AN EXPLANATORY SCALE OF
COGNITIVELY DESIGNED ALGEBRA STO-
RY PROBLEMS
13 July 2015, 3:30 p.m.-4:15 p.m.
(15:30-16:15)



Jee-Seon Kim
University of Wisconsin-Madison, USA
CAUSAL INFERENCE WITH OBSERVA-
TIONAL MULTILEVEL DATA:
CHALLENGES & STRATEGIES
14 July 2015, 3:30 p.m.-4:15 p.m.
(15:30-16:15)



Elizabeth A. Stuart
Johns Hopkins University, USA
PROPENSITY SCORE METHODS IN THE
CONTEXT OF COVARIATE MEASURE-
MENT ERROR
13 July 2015, 3:30 p.m.-4:15 p.m.
(15:30-16:15)

INVITED SYMPOSIA

(Refer to the Schedule-At-A-Glance for exact dates and times.)

Detecting Cheating on Tests

Chair: **Wim J. van der Linden**, McGraw-Hill Education CTB, Monterey, CA, USA

Presenters: Arianto Wibowo, Vincent Kieftenbeld, Dmitry I. Belov, Wim J. van der Linden, Xi Wang

Psychometrics in East Asia

Chair: **Wen-Chung Wang**, The Hong Kong Institute of Education, Hong Kong

Presenters: Tao Xin, Kohei Adachi, Soomook Lee, Bor-Chen Kuo

Advances in Modeling and Analysis for Educational Testing

Chair: **Jingchen Liu**, Columbia University, New York, NY, USA

Presenters: Hua-Hua Chang, Matthias von Davier, Matthew Johnson, Gongjun Xu, Jingchen Liu

Handling Missing Data in Psychometrics

Chair: **Anders Skrandal**, Norwegian Institute of Public Health, Oslo, Norway

Presenters: Irini Moustaki, C.A.W. Glas, Victoria Savalei, Anders Skrandal, Joost van Ginkel

Publication Trade Secrets: Straight from the Editors' Mouths

Chair: **Jimmy de la Torre**, Rutgers, The State University of New Jersey, New Brunswick, NJ, USA

Presenters: Willem Heiser, Li Cai, Kurt Geisinger, Hua-Hua Chang, Paul De Boeck, Irini Moustaki, Matthias von Davier, Jimmy de la Torre

Roger E. Millsap Tribute Symposium: Perspectives on Measurement Invariance

Chairs: **Paul De Boeck**, The Ohio State University, Columbus, OH, USA and

Jelte Wicherts, Tilburg University, Tilburg, the Netherlands

Presenters: Oi-Man Kwok, Suzanne Jak, Ting Wang, Hao Wu, Jelte Wicherts, Paul De Boeck

CONTRIBUTED SYMPOSIA

(Refer to the Schedule-At-A-Glance for exact dates and times.)

New Developments in Network Psychometrics

Chair: **Riet van Bork**, University of Amsterdam, the Netherlands

Presenters: Denny Borsboom, Claudia van Borkulo, Sacha Epskamp, Riet van Bork

Modeling Responses and Response Times to Psychological Tests

Chair: **Dylan Molenaar**, University of Amsterdam, Amsterdam, the Netherlands

Presenters: Abe Hofman, Paul De Boeck, Gunter Maris, Han van der Maas, Dylan Molenaar

Psychometric Issues in Large Scale Assessment in the International Context

Chair: **Hongyun Liu**, Beijing Normal University and Xiaohong Gao, ACT, Inc., Iowa City, IA, USA

Presenters: Tao Xin, Dongmei Li, Xin Li, Danhui Zhang, Xiaohong Gao

Recent Developments in Latent Variable Models for Complex Data Structures

Chair: **Silvia Cagnone**, University of Bologna, Italy

Presenters: Marco Alfò, Paolo Giordani, Maria Francesca Marino, Silvia Bianconcini, Silvia Cagnone

Computerized Multistage Testing: Theory and Applications

Chair: **Duanli Yan**, Educational Testing Service (ETS), Princeton, NJ, USA

Presenters: Yi Zheng, Oliver Zhang, Chris Han, Duanli Yan



(c) Jakub Halun, distributed under a CC-BY 3.0 license

PROGRAM EVENTS

Group Photo

Monday, July 13: 9:40 a.m. (09:40)
Main Building – Jingshi Square

Promptly at 9:40 a.m. (09:40) a Conference sponsored group photo will be taken. The photo is sponsored by Mplus (Muthén & Muthén).

Please meet promptly at the Main Building at the BNU campus (refer to the walking map for the exact location).

The group photo will be posted on the Society website for attendees to download following the conference.

Welcome to Beijing Poster Reception

Monday, July 13: 4:30 p.m.-6:30 p.m. (16:30-18:30)
Jingshi Xuetaang Building, Foyer areas

Join the Society and local BNU hosts for a wonderful evening to welcome meeting attendees and explore a diverse collection of research at the conference poster session. Discuss topics that are sure to pique your interest with your peers in a casual, fun, and informal setting. The event includes an hors d'oeuvres reception featuring Chinese flair and beverages. Authors will be standing by their posters between 4:30 p.m. and 6:30 p.m. (16:30-18:30). This event is also open to meeting attendee guests at no additional charge.

Closing Reception & Banquet Dinner

Wednesday, July 15: 7:00 p.m.-9:30 p.m. (19:00-21:30)
Jingshi Hotel:
Dining Hall–1st Floor
Dining Hall–2nd Floor

Join us at the Jingshi Hotel Dining Hall for a final elegant dinner, host bar, and networking with fellow attendees. The Society has arranged two locations for the closing banquet. No formal closing remarks will take place; therefore, attendees can choose to dine in either dining hall located on the first or second floors of the hotel.

Your guest is welcome to the banquet for an additional fee. Stop by the Society registration desk located in the Lobby of the Jingshi Hotel to inquire. Guest banquet tickets cost \$55 USD.

IMPS Excursion Trip

Thursday, July 16: 7:15 a.m.-7:00 p.m. (07:15-19:00)
Visit the Great Wall, the Summer Palace, and National Stadium.



(c) Sam Xli, distributed under a CC-BY 2.0 license



(c) Shizhao, distributed under a CC-BY 2.0 license

Join the Society and fellow conference goes on a full-day excursion to see some of Beijing's best tourist attractions. Transportation will depart from the Jingshi Hotel on Thursday morning. The first stop will be the Great Wall of China. The second stop includes a picnic lunch and exploring at the Summer Palace. On our way back to the hotel, we will pass by the National Stadium (The Birds Nest) and the National Aquatic Center (The Watercube). The bus will stop for photo opportunities here (approximately 10-20 minutes) for those interested in snapping a few photos from the bus window. Attendees are welcome to exit, explore these grounds on their own, and arrange transportation on their own back to the hotel. Both attractions will close around 7:00 p.m. (19:00).

PROGRAM EVENTS

Excursion Schedule*: Thursday, July 16: 7:00 a.m.-7:00 p.m. (07:00-19:00)

7:00 a.m.-7:55 a.m. (07:00-07:55)

Load buses—Depart at 8:00 a.m. (08:00) sharp!

8:00 a.m.-9:30 a.m. (08:00-09:30)

Transfer to Great Wall

9:30 a.m.-12:30 p.m. (09:30-12:30)

Visit Great Wall at the Badaling Section

12:30 p.m.-1:00 p.m. (12:30-13:00)

Lunch distribution as buses reload. (Attendees may choose to eat their lunch on the way to the Summer Palace, or wait to have a picnic lunch on the Summer Palace grounds.)

12:30 p.m.-1:00 p.m. (12:30-13:00)

Load buses—Depart at 1:00 p.m. (13:00) sharp!

1:00 p.m.-2:00 p.m. (13:00-14:00)

Transfer to Summer Palace

2:00 p.m.-4:15 p.m. (14:00-16:15)

Visit Summer Palace

4:15 p.m.-4:45 p.m. (16:15-16:45)

Load buses at Summer Palace—Depart at 4:45 p.m. (16:45) sharp!

4:45 p.m.-5:15 p.m. (16:45-17:15)

Transfer back to hotel, en route visit the National Stadium. Group to view the Bird's Nest and Water Cube from buses.

5:15 p.m.-6:00 p.m. (17:15-18:00)

Bus will go around the National Stadium grounds to allow attendees to snap pictures from the bus of the Bird's Nest and Water Cube, stopping for 5-10 minutes at each location. (Pending the driver location, buses will allow attendees to get off the bus to snap a few pictures where the bus stops briefly. However, anyone who leaves the bus area to explore the grounds further will be required to get their own transportation back to their hotel.)

6:00 p.m.-6:30 p.m. (18:00-18:30)

Return back to the Jingshi Hotel to drop off attendees. (At the very latest the bus will return by 7:00 p.m. (19:00).)

*IMPORTANT NOTE: The times above are approximate. Depending on traffic, road construction, weather, and other related issues, shuttles will attempt to stay as close to this schedule as possible, but we please ask your patience if there are unexpected delays. Please pay close attention to instructions from your tour guide/volunteer, who will be located on your bus, to ensure departure times have not changed.

ADDITIONAL NOTES:

- All attendees should line up in the Jingshi Hotel Lobby with the group they would like to sit with on the bus transportation. Once the attendee and their guests enter the bus, they will be riding the same bus all day. (Each bus will be numbered. Attendees will receive a ticket with their bus assignment the morning of the Excursion.)
- Location of drop-off/pick-up at the Great Wall will be the same place in the parking lot. Please pay close attention to your bus location as you exit the bus to ensure you are able to relocate your assigned bus at the end of the event.
- Location of drop-off/pick-up at the Summer Palace will be different:
Drop-off: New Palace Gate
Pick-up: North Palace Gate
- Anyone no longer able to attend the Excursion should stop by the meeting registration desk to make the staff aware of your change of plans. Thank you.

Great Wall Tour Company Tips:

1. Things to take: sports shoes or hiking boots, sticks, cap, sunglasses, sunscreen, bottles of water.
2. Use toilets at the entrance of the Wall: There are no toilets at the Wall. (Please always carry your own toilet paper.)
3. Be a green and responsible visitor, taking nothing but photos and leaving nothing but footprints.
4. Don't go to tower 15+ as you won't make it back in time. You can access the lift, but we don't recommend it during the busy season. Longer lines and longer wait times mean that attendees might not make it back in time to catch the IMPS transportation that leaves at 1:00 p.m. (13:00) sharp!

Summer Palace Tour Company Tips:

1. We do not have many specific tips when visiting the Summer Palace, as it is easy to explore and enjoy the attractions.
2. Maps of the grounds are available for purchase on site. (Main attraction: Tower of the Fragrance of the Buddha).
3. Remember: It will be crowded in Summer Palace during the summer vacation, therefore, plan accordingly per the potential longer lines and wait times.
4. We do not recommend using the boats/boat rides at the Summer Palace during the busy season if you are planning to explore other parts of the grounds, as it is difficult to fit both sightseeing and a boat ride into the Excursion timeframe.
5. Please make sure you keep in mind the meeting location and meeting time at the end of this Excursion, as the pick-up location is different than where attendees were dropped off. IMPS transportation is scheduled to leave at 4:45 p.m. (16:45) sharp!

GENERAL CONFERENCE INFORMATION

Name Badge Policy

Conference name badges are required for entrance to all conference events.

Registration & Information Desk

Conference registration and information desk will be available in the main lobby of the Jingshi Hotel throughout the Annual Meeting, July 12 to July 15. A representative from the Psychometric Society Office is available to offer assistance during the conference to answer questions, renew memberships, or assist those interested in joining the Psychometric Society. To join online go to: <https://psychometricsociety.org/user/register>.

Hours of Operation:

Sunday, July 12

7:45 a.m.-12:00 noon (07:45-12:00)

Monday, July 13

7:00 a.m.-5:00 p.m. (07:00-17:00)

Tuesday, July 14

7:00 a.m.-5:00 p.m. (07:00-17:00)

Wednesday, July 15

7:00 a.m.-3:30 p.m. (07:00-15:30)

Information for Presenters

Copies

If you plan to distribute paper handouts during your presentation, you are responsible for copying and providing them at the conference. There are NO conference-sponsored copy machines for your use. Presenters are welcome to copy/print on site at the Jingshi Hotel. The cost ranges between 1-5 RMB per page. The hotel front desk staff can assist with this request. Another option is to send your document directly to the campus printer, Gang ZHU, via email at: 15001305259@163.com. The price ranges between 0.5-1 RMB. The printer can deliver your content directly to the Jingshi Hotel for pick-up.

Session Rooms

All session rooms will be equipped with an LCD video projector, PC computer with DVD drive, USB hub, Internet connection, audio for the computer, a projection screen, wireless lavalier microphone, mouse and slide advancer, laser pointer, and a podium with a microphone. A MAC computer is available on request. Please arrange this on site at least three hours prior to your session start time (not your lecture time). Please arrange this through the Society registration desk on site. Presenters are also welcome to bring their own laptop (and own connection cords) to connect with the session room LCD video projector. Otherwise, each meeting room will provide one PC computer (with English keyboard) in each presentation room with the following software:

Windows 7: Office 2010, IE 10, Firefox, Chrome, Acrobat Reader XI, iTunes 11, QuickTime 7.7.5, VLC 2.0.6.

page 16

Mac OS X 10.84: Office 2011, Firefox, Chrome, Safari 6.0.5, iTunes 11, VLC 2.0.5.

If you need assistance prior, during, and/or after a presentation, you may request assistance from the **volunteers wearing the orange IMPS Volunteer hat**. They will contact the audiovisual technicians on call to assist you.

Speaker and Presenter Testing and Practice Room

Speakers may test their presentations using one of BNU campus computer systems between 7:00 a.m.-5:00 p.m. (07:00-17:00) located in the Yingdong Conference Hall, in the Mini Meeting Room on the 2nd Floor. A PC will be available for your use Monday-Wednesday to test and practice your presentation. First come, first served.

Poster Session

Presenters will put up posters on Monday, July 13, from 3:00-4:30 p.m. (15:00-16:30) and authors must stand with their poster from 4:30 p.m.-6:30 p.m. (16:30-18:30). Posters should be removed by authors following the session by 7:00 p.m. (19:00). Any posters not removed after the session will be kept at the conference registration & information desk until Wednesday, July 15 at 3:30 p.m. (15:30) and then will be recycled by the Jingshi Hotel.

Session Chair/Moderator & Volunteers Training

Monday, July 13: 7:50 a.m.-8:10 a.m. (07:50-08:10)

Yingdong Conference Hall, Conference Room 2 (2nd Floor).

If you have volunteered to moderate a session and/or are a chairperson of a session, please attend a short training to learn about your responsibility and how to troubleshoot the audiovisual equipment. You will be running the sessions, so understanding the equipment and how the sessions will flow consistently between all sessions and rooms will help ease your mind. This is also an opportunity for the conference organizers to discuss their vision of the flow for the presentations.

Conference Meals & Receptions

Breakfast will be offered at each Society hotel. The conference will provide morning and afternoon beverage service during the session breaks, and a daily buffet lunch will be served at The Northwestern Restaurant (refer to walking map for exact location) over the lunch break. *Don't forget your daily lunch ticket*. Monday night will feature reception foods showcasing local Chinese fare. On Wednesday evening, an elegant traditional Chinese banquet will be located at the Jingshi Hotel. See your conference schedule for specific times and locations. **If you need assistance in finding event and session buildings throughout the conference, IMPS 2015 volunteers will be wearing orange IMPS Volunteer hats.**

GENERAL CONFERENCE INFORMATION

Luggage Storage on Your Departure Day

Attendees who check out of their hotel rooms in the morning are encouraged to store their luggage at their hotel front desk.

Conference Message Board

The Conference Message Board is located near the registration and information desk in the Jingshi Hotel Lobby. Feel free to post job vacancies, messages for colleagues, announcements, and/or other items of interest.

Small Group Meeting Space

A small boardroom has been reserved for unexpected meetings when conference attendees would like to take advantage of having colleagues in one place and to meet face-to-face. The Society has reserved space at the Yingdong Conference Hall, in Conference Room 2 (2nd Floor), available Monday through Wednesday, 7:00 a.m.-5:00 p.m. (07:00-17:00) on a first-come, first-served basis, with a sign-up sheet posted outside the room in 30-minute increments. We encourage you to take advantage of this unique opportunity to gather together.

Special Accommodations

The majority of the BNU campus is accessible. If you require special accommodations during the conference, please visit the Psychometric Society staff located at the registration & information desk in the Jingshi Hotel Lobby.

Conference Attire

Business casual attire is suggested for the Conference but is not mandatory. We recommend bringing a sweater or jacket to the conference, which is kept quite cool inside the buildings. Sessions will be located in different buildings on the BNU campus, so we highly recommend bringing comfortable walking shoes, layers, and an umbrella.

Photography Disclosure

Portions of this event may be videotaped and photographed by the conference and/or the media. By attending this Conference, you accept the possibility that you may be videotaped or photographed.

IMPS Campus Session Buildings Wireless Internet Access

To enable your connection to the BNU wireless network, open your web browser. You will see a login screen:

<http://172.16.202.201/Eng.html>

Use the username: imps2015

Use the password: imps2015

NOTE: Please limit your use to one device per person at a time. If you have any problems logging in, you may contact Xian Wang at: nicabeinternation@bnu.edu.cn.

Jingshi Hotel Wireless Internet Access

Please refer to the flyer located in the attendee conference material bag for instructions. The hotel has its own WiFi system, separate from the BNU campus Internet.

Internet Kiosk Computer

One (1) free Internet kiosk computer desk will be located in the lobby of the Jingshi Hotel. Attendees and/or guests of the IMPS 2015 conference are welcome to use this computer for items such as checking email and looking up flight information. (The use of this computer is on a first-come/first-served basis. Please limit your use to 10-minutes at a time if other attendees are waiting in line.)

Memory Sticks Containing the IMPS 2015 Program and Abstract Books

The Society has placed the IMPS 2015 Program Book, Abstract Book, and Poster Abstract Book on several memory sticks for temporary use on site. Memory Sticks (thumb drives) for your use will be located at the Internet Kiosk Computer Desk for ease of download to your personal computer. (If you need additional assistance, please feel free to contact the registration team located at the registration desk in the Jingshi Hotel Lobby.)

Lost and Found

Items found during the conference may be turned in at the Society registration and information desk, located in the lobby of the Jingshi Hotel. You may retrieve lost items from the Society during the registration desk open hours from Sunday, July 12, through Wednesday, July 15, 2015. Any lost and found items left after the conference will be left at the Jingshi Hotel front desk. If unclaimed, items will be donated to charity after one (1) week.



GENERAL CONFERENCE INFORMATION

Language, Communication, and Traveler Safety Tips

Beijing is generally a very safe city for travelers. There is no shortage of things to see or do during your visit. As with any major city, there are tips for being safe while in Beijing.

1. Traffic in Beijing is very heavy. Unlike many western cities, pedestrians do not have the right of way when crossing streets in Beijing. Cross only at marked crossing areas, and watch traffic carefully.
2. While most hotel registration staff and most people on the Beijing Normal University campus speak English, this is not true of the general population. For example, taxi drivers generally do not speak English. It is therefore important to be well prepared and bring along maps with Chinese instructions for getting to your hotel and to the conference site.
3. As with any major city, there are pickpockets and people who will attempt to steal from tourists. You should take care with your bags and personal belongings when exploring. Keep your cash separate from your wallet and do not leave personal items unattended in public areas.
4. Avoid walking, running, or exploring alone. Always let a friend or the hotel know when you are going out exploring, and when you plan to return.
5. Street and subway signs in Beijing are generally both in Chinese characters and pinyin (phonetic transcription in Roman letters).
6. There are cellphone apps for translating between Chinese and English (and other languages). Many of these rely on an Internet connection.
7. Avoid wearing your conference badge when not in the conference area. When in the conference areas, you should wear your conference ID at all times.
8. When in your hotel room, do not open the door for strangers. If someone knocks on your door claiming to be with the hotel, you should feel free to contact the front desk to verify their identity. Keep your door securely locked when in your room.
9. Store your personal valuables in the room safe or hotel safe deposit box. If your hotel does not retain your passport, you should consider storing it in your room safe or a hotel safe deposit box.
10. If you have a safety and security issue, you should notify the conference staff located in the Lobby of the Jingshi Hotel. They will work with the necessary resources to assist you. IMPS has compiled comprehensive plans for addressing emergencies on site. Please report any security issues to conference staff immediately.

Hospital and Health Center Near Campus

The Second Artillery General Hospital of Chinese People's Liberation Army

Address: No.16 Xijiekouwai Street, 100875 P.R. CHINA

Located to the southeast of Jingshi Hotel

Phone: +86-10-66343337, +86-15311543337

Website: <http://www.epzyy.cn/>

Hours: 24 hours

The BNU Community Health Service Center

Address: Located on the BNU campus

Phone: +86-10-58808223

Hours: 24 hours

Pharmacies Near Campus

Xin Xing De Sheng Pharmacy (Xueyuan South Road site)

First Floor, Xin Rong Quan Property Building

No.4 Xueyuan South Road

Haidian District, Beijing

Phone: +86-10-62266977

Hours: 24 hours

De Wei Zhi Pharmacy (Bei Tai Ping Zhuang site)

No.8 Xijiekouwai Street, Xicheng District

(across the street from the east gate of BNU).

Phone: +86-10-62023278, +86-10-62022268

Hours: 24 hours

Exercise, Parks, Spa, & Pool Recreational Facilities/Locations

Places to exercise include Rendinghu Park near the Holiday Inn and Shuangxiu Park near the Garden Hotel. The Holiday Inn and Garden Hotel have well-equipped fitness centers. Check with your hotel front desk/concierge for exact fitness amenities within your hotel. The Garden Hotel also offers a sauna complex where guests can purchase services to relax, get a massage, pedicure, and other salon treatments.

Beijing Normal University campus welcomes Conference visitors to use its recreational facilities. To use the facilities you will need to show a photo I.D., your conference badge, and pay a small guest fee per day usage.

We sincerely hope you
have a wonderful visit
to Beijing, China.

Thank you for joining us at IMPS 2015!

COMMITTEES

IMPS 2015 Organizing Committee

Chair:

Sophia Rabe-Hesketh
President
University of California, Berkeley
Graduate School of Education
3659 Tolman Hall, #1670
Berkeley, CA, 94720-1670
Telephone: 510 642-5287
Fax: 510 642-4803
Email: sophiarh@berkeley.edu

Members:

Albert Maydeu-Olivares
Immediate Past President
University of Barcelona
Barcelona, Spain

Terry Ackerman
President-Elect
University of North Carolina
Greensboro, NC, USA

Luz Bay
Secretary
The College Board
Newtown, PA, USA

Daniel Bolt
Treasurer
University of Wisconsin
Madison, WI, USA

Regular Members (2014-2015)
Li Cai
University of California
Los Angeles, CA, USA

Regular Members (2015-2016)
Paul De Boeck
The Ohio State University
Columbus, OH, USA

Klaas Sijtsma
Tilburg University
Tilburg, the Netherlands

Adjunct Members (2015)
Hua-Hua Chang
University of Illinois
Urbana Champaign, IL, USA

Anders Skrondal
Norwegian Institute of Public Health
Oslo, Norway

Tao Xin
Beijing Normal University
Beijing, China

Danhui Zhang
Beijing Normal University
Beijing, China

IMPS 2015 Local Organizing Committee

Tao Xin
Co-Local Host
Vice Director, National Innovation
Center for Assessment of Basic Edu-
cation Quality
Beijing Normal University
No. 19, Xijiekou Wai Street
Haidan District
Beijing, China, 100875
Telephone: +86 010-58800178

Hongyun Liu
Co-Local Host
Professor
Beijing Normal University
No. 19, Xijiekou Wai Street, Haidan
District
Beijing, China, 100875
Telephone: +86 010-58800821

Jia Liu
Beijing Normal University
Beijing, China

Ning Han
National Education Examinations
Authority
Ministry of Education, China

Jia Yong Li
Beijing Normal University
Beijing, China

Hong Yun Liu
Beijing Normal University
Beijing, China

Xiao Man Wei
Beijing Normal University
Beijing, China

Shu Mei Zhang
Beijing Normal University
Beijing, China

Tao Yang
Beijing Normal University
Beijing, China

Xiang Dong Yang
East China Normal University
China

Min Qiang Zhang
South China Normal University
China

Jian Tao
Northeast Normal University
China

For more information about the
Psychometric Society or membership,
contact the Psychometric Society
Management Company:
The Rees Group, Inc.
2424 American Lane
Madison, WI 53704
Telephone: +1-608-268-4712
Fax: +1-608-443-2474
Email: [membership@psychometric-
society.org](mailto:membership@psychometric-society.org)

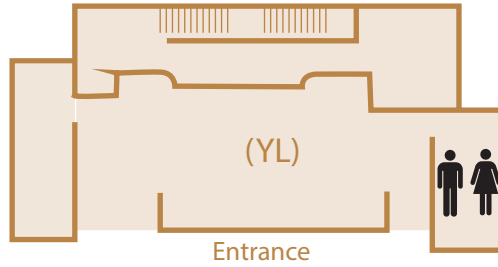


FLOOR PLANS

Yingdong Conference Hall (Y)

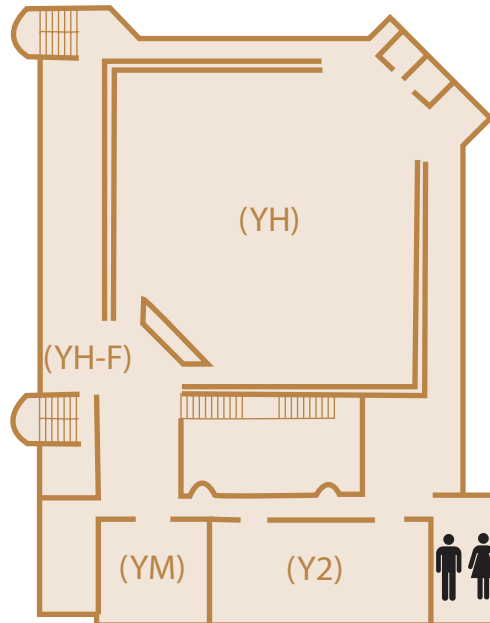
First Floor

- (YL) Main Lobby Entrance
- Exhibit and Sponsor Area



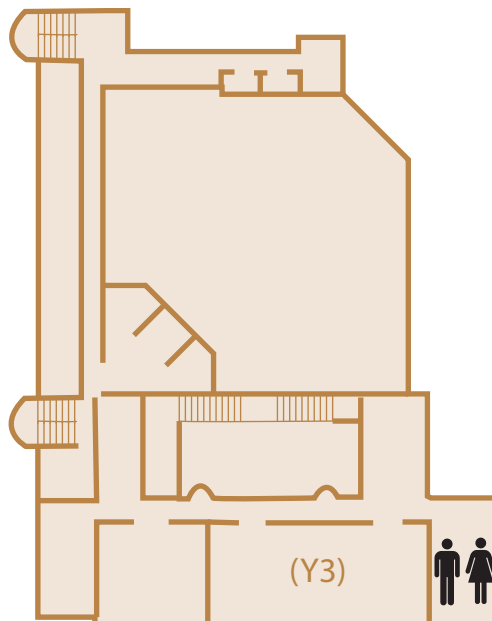
Second Floor

- (YH) Lecture Hall
- (YH-F) Foyer Area
- (YM) Mini-Meeting Room
- (Y2) Conference Room 2



Third Floor

- (Y3) Conference Room 3



FLOOR PLANS

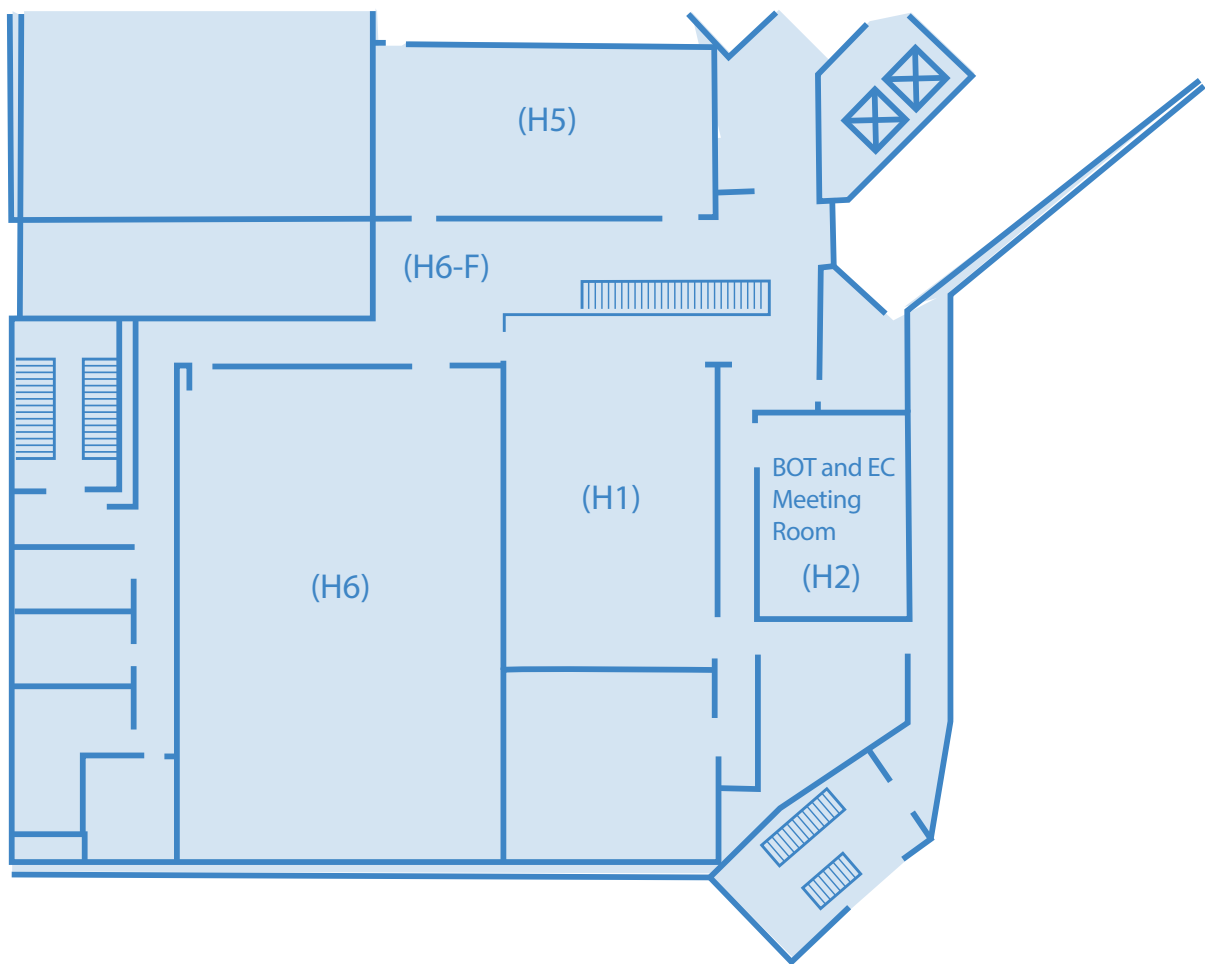
Jingshi Hotel (H): Third Floor

Third Floor

(H6) Room 6
(H5) Room 5
(H1) Room 1
(H6-F) Foyer Area

Not Shown

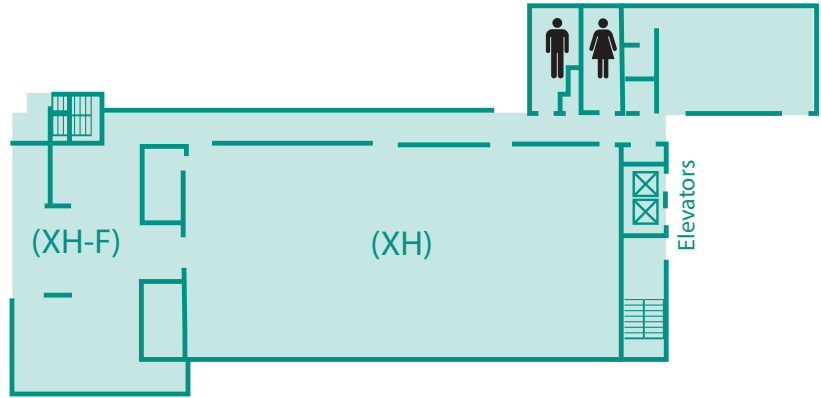
(HL) Hotel Lobby
(HD1) Dining Room 1
(HD2) Dining Room 2



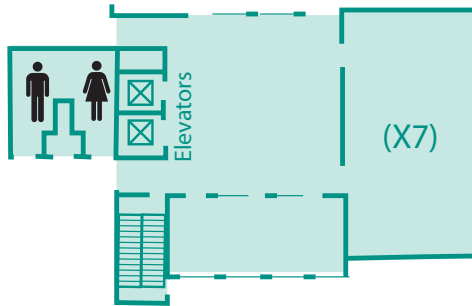
FLOOR PLANS

Jingshi Xuetang (X)

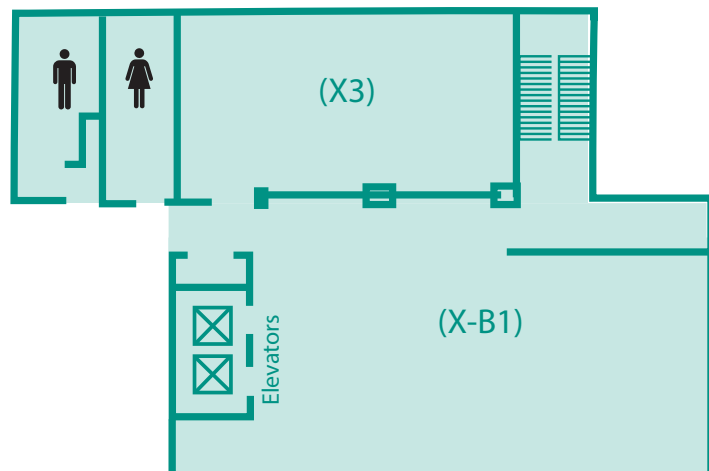
First Floor
(XH) Jingshi Hall
(XH-F) Foyer Area



Third Floor
(X7) The 7th Conference Room



Basement (B1)
(X-B1) Lobby
(X3) The 3rd Conference Room



Walking Map

IMPS 2015 Beijing Normal University, China
2015年国际心理测量研讨会, 北京师范大学

会场平面图
Walking Map of Conference Locations





NOTES



NOTES

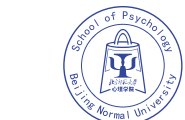
**Thank
YOU!**

ACER

ata



中国基础教育质量监测协同创新中心
Collaborative Innovation Center of Assessment
toward Basic Education Quality
CICA-BEQ



北京師範大學
心理學院

GMAC
GRADUATE MANAGEMENT
ADMISSION COUNCIL

PEARSON

STATA[®]

ACT[®]

AIR[®]
AMERICAN INSTITUTES FOR RESEARCH[®]

CollegeBoard
connect to college success[™]

ETS[®]
Listening. Learning. Leading.[®]

eMetric



**科大讯飞
IFLYTEK**

LSAC[®]

IMPS would like
to thank our
2015 Exhibitors
and Sponsors.

Mplus[®]

SAS | THE POWER TO KNOW.

**海天科技
SEA SKY LAND**