

IMPS 2016

Asheville, NC, USA • July 11-15, 2016



81st Meeting Asheville, NC

CONTENTS

Welcome	3
Schedule At-A-Glance.....	4-9
Floor Plans.....	10-11
Short Courses.....	12
Keynotes	12
Invited Speakers	13
Special Sessions.....	13
Program Events.....	14-17
Group Photo	14
Welcome to Asheville Poster Session Reception	14
Excursion Trip	15
Closing Banquet Reception.....	16
Shuttle Bus Schedule.....	17
General Conference Information.....	18-19
Information for Presenters.....	18
Committees	20



WELCOME

Welcome to the International Meeting of the Psychometric Society (IMPS) 2016 in beautiful Asheville, North Carolina. Asheville, a city nestled in the Blue Ridge Mountains, has a warm, welcoming personality and friendly culture. It is a truly distinctive venue blessed with buskers and chefs, artists and brewers, and countless museums, micro-breweries, shops, and restaurants. Attendees are strongly encouraged to explore Asheville and the surrounding area!

IMPS 2016 will be held at the Renaissance Hotel in Downtown Asheville. The conference program will begin at 8:00 a.m. on Tuesday, July 12, in the main ballroom of the Renaissance. It will end with a banquet on Friday, July 15, at the historic Omni Grove Park Inn. All sessions of the conference will be held in the Renaissance. Here is the conference week:

- On Monday, July 11, there will be three full-day, pre-conference short courses: *Computerized Adaptive Testing and Multistage Testing with R*; *flexMIRT®: Flexible Multilevel Multidimensional Item Analysis and Test Scoring*; and *Bayesian Modeling Using Stan*.
- Tuesday will be a full day of sessions followed by a Welcome Reception on the Grand Ballroom Patio, a poster session, and a champagne toast with birthday cake celebrating the 80th Anniversary of our journal, *Psychometrika*.
- After morning sessions, Wednesday's feature will be an excursion to the Vanderbilt mansion: The Biltmore Estates. Attendees can tour the largest privately-owned house in America, the gardens, the shops, and a complimentary wine tasting.
- Thursday will be a full day of sessions, highlighted by a challenging Psychometric Trivial Pursuit lunch in the main ballroom.
- Friday will be a busy day of sessions. The conference will formally end with the Presidential Address, an Award Ceremony, a preview to IMPS 2017, and a closing banquet at the historic, five-star hotel and resort, the Omni Grove Park Inn.

The Society is truly blessed to have a great agenda featuring incredible keynote and invited speakers, career award and dissertation prize speakers, a debate, a virtual session, a job fair, and anniversary sessions celebrating our journal, all in a spectacular, warm, and vibrant mountain venue.

Enjoy and Celebrate!

Terry Ackerman
University of North Carolina, Greensboro, NC, USA
IMPS 2016 Chair

MONDAY, July 11

7:45 a.m. - 9:45 a.m. 07:45 - 09:45	IMPS Short Course Registration Open <i>2nd Floor Foyer Area</i>
8:00 a.m. - 9:30 a.m. 08:00 - 09:30	Continental Breakfast <i>2nd Floor Foyer Area</i>
9:00 a.m. - 4:00 p.m. 09:00 - 16:00	All Day Workshops <i>Swannanoa</i> <i>Workshop 1: Computerized Adaptive Testing and Multistage Testing with R</i> David Magis Duanli Yan Alina von Davier <i>Victoria</i> <i>Workshop 2: flexMIRT®: Flexible Multilevel Multidimensional Item Analysis and Test Scoring</i> R.J. Wirth Carrie Houts <i>Alexander</i> <i>Workshop 3: Bayesian Modeling Using Stan</i> Ben Goodrich Daniel Furr
9:30 a.m. - 9:45 a.m. 09:30 - 09:45	Refreshment Break <i>Breaks will be located in each workshop: Alexander, Swannanoa, Victoria</i>
10:00 a.m.-12:00 noon (10:00-12:00)	Editorial Council Meeting <i>Top of the Plaza</i>
12:00 noon - 1:30 p.m. 12:00 - 13:30	Lunch on the town (on your own)
1:30 p.m.-4:30 p.m. (13:30-16:30)	Board of Trustees Meeting <i>Top of the Plaza</i>
2:30 p.m. - 2:45 p.m. 14:30 - 14:45	Refreshment Break <i>Breaks will be located in each workshop: Alexander, Swannanoa, Victoria</i>
8:30 p.m. - 10:00 p.m. 20:30 - 22:00	Graduate Student Social <i>Off Site: Lexington Avenue Brewery (LAB)</i>

TUESDAY, July 12

7:00 a.m. - 5:00 p.m. 07:00 - 17:00	IMPS Registration Open <i>Grand Ballroom: Pre-Function Corridor</i>
7:00 a.m. - 8:30 a.m. 07:00 - 08:30	Continental Breakfast <i>Grand Ballroom: Pre-Function Corridor</i>
8:00 a.m. - 8:15 a.m. 08:00 - 08:15	Welcome <i>Grand Ballroom: Salon A & B</i> Terry Ackerman
8:15 a.m. - 9:15 a.m. 08:15 - 09:15	Keynote Speaker: Jereon Vermunt <i>Grand Ballroom: Salon A & B</i> <i>Simplifying the Use of Latent Class Analysis by Means of Stepwise Modeling Approaches</i> Chair: Klaas Sijtsma
9:15 a.m. - 9:30 a.m. 09:15 - 09:30	Refreshment Break <i>Grand Ballroom: Pre-Function Corridor</i>

TUESDAY (continued)

9:30 a.m. - 11:00 a.m. 09:30 - 11:00	Parallel Sessions, Tuesday AM <i>Swannanoa</i> <i>Item Response Theory</i> Chair: Steven Culpepper Jiyun Zu Youn Seon Lim Luc Le Evan Olson <i>Windsor Ballroom: Salon A</i> <i>Factor Analysis</i> Chair: Shaobo Jin Junhao Pan Luis Garrido Sierra Bainter Tenko Raykov <i>Victoria</i> <i>Estimation and Computational Methods</i> Chair: David King Johnson Li Paul Dudgeon Yongtian Cheng <i>Cherokee</i> <i>Applications</i> Chair: Jonathan Rollins Samantha Bouwmeester William Lorie Lihua Xu Robert Hillen <i>Windsor Ballroom: Salon B</i> <i>Structural Equation Modeling</i> Chair: Ross Jacobucci Ji Hoon Ryoo Po-Hsien Huang Xijuan Zhang Nora Umbach <i>Grand Ballroom: Salon A</i> <i>Measurement Invariance and Differential Item Functioning</i> Chair: Matthias von Davier Daniel J. Bauer David Thissen Terrence D. Jorgensen Yu-Wei Chang <i>Grand Ballroom: Salon B</i> <i>Symposium 1: Quantification Theory from Modern Perspectives</i> Chair: Pieter Kroonenberg Pieter Kroonenberg José G. Clavel Rosaria Lombardo Takashi Murakami
11:00 a.m. - 11:15 a.m. 11:00 - 11:15	Refreshment Break <i>Grand Ballroom: Pre-Function Corridor</i>
11:15 a.m. - 11:45 a.m. 11:15 - 11:45	Dissertation Prize Co-Winners: Yang Liu, Stijn Verdonck <i>Grand Ballroom: Salon A & B</i> <i>Yang Liu: Generalized Fiducial Inference for Graded Response Models</i> Chair: Terry Ackerman <i>Stijn Verdonck: Advances in Choice Response Time Modeling: Non-Linearity, Efficient Computation, and Non-Decision Time</i> Chair: Jeff Douglas

TUESDAY (continued)

- 11:45 a.m. - 12:15 p.m.
11:45 - 12:15 **Business Meeting, All are welcome!**
Grand Ballroom: Salon A & B
Announcement of IMPS 2018, Elections, & Financial Report
Chair: Terry Ackerman
- 12:15 p.m. - 12:45 p.m.
12:15 - 12:45 **Group Photo**
Off Site: Pack Square Park Amphitheater
- 12:45 p.m. - 1:45 p.m.
12:45 - 13:45 **Lunch on the town (on your own)**
- 1:45 p.m. - 3:15 p.m.
13:45 - 15:15 **Parallel Sessions, Tuesday PM 1**
Grand Ballroom: Salon A
Symposium 2: Virtual International Collaboration
Chair: Luz Bay
Önder Sünbül (Turkey)
Remo Ostini (Australia)
Anil Kanjee (S. Africa)
Ruben Klein (Brazil)
- Grand Ballroom: Salon B**
Validity and Reliability
Chair: Jacob Westfall
Anne Traynor
Eva A.O. Zijlmans
Joe Grochowalski
Youngjun Lee
- Swannanoa**
Computer-Based Testing
Chair: Sam Ye
Eren Halil Ozberk
Qi Diao
Xiao Luo
- Victoria**
Symposium 3: Recent Advances in Social Network Methodology
Chair: Tracy Sweet
Alina von Davier
Bonne Zijlstra
Samrachana Adhikari
Tracy Sweet
Beau Dabbs
- 3:15 p.m. - 3:30 p.m.
15:15 - 15:30 **Refreshment Break**
Grand Ballroom: Pre-Function Corridor
- 3:30 p.m. - 4:15 p.m.
15:30 - 16:15 **Invited Speakers:**
Ric Luecht, Carolin Strobl
Grand Ballroom: Salon A
Ric Luecht: Engineering Design in the Assessment World: A New Paradigm for Test Design and Development with Psychometric Implications
Chair: Luz Bay
- Grand Ballroom: Salon B**
Carolin Strobl: Model-Based Recursive Partitioning of Psychometric Models: A Data-Driven Approach for Detecting Heterogeneity in Model Parameters
Chair: Anders Skrondal
- 4:15 p.m. - 4:25 p.m.
16:15 - 16:25 **Break**

TUESDAY (continued)

- 4:25 p.m. - 5:55 p.m.
16:25 - 17:55 **Parallel Sessions, Tuesday PM 2**
Cherokee
Item Response Theory
Chair: Marie Wiberg
Ji Seung Yang
Andries van der Ark
William Muntean
Xiaying Zheng
- Grand Ballroom: Salon A**
Psychometrika Anniversary Session 1
Chair: Larry Hubert
Willem Heiser
Klaas Sijtsma
Hans-Friedrich Kohn
Larry Hubert
- Grand Ballroom: Salon B**
Measurement Invariance and Differential Item Functioning
Chair: Dave Thissen
Levent Ertuna
Sakine Gocer Sahin
Xinya Liang
- Swannanoa**
Diagnostic Classification Model
Chair: Francis Tuerlinckx
Kevin Carl Santos
Lihong Song
Ömür Kaya Kalkan
- Victoria**
Multilevel/Hierarchical/Mixed Methods
Chair: Oksana Naumenko
Kevin Duisters
Liu Yue
Nathaniel E. Helwig
Patricia Martinkova
Satoshi Usami
- 6:00 p.m. - 8:00 p.m.
18:00 - 20:00 **Poster Session Welcome Reception**
Grand Ballroom: Salon C
Windsor Ballroom: Salon A & B
Windsor Hallway
Grand Ballroom: Pre-Function Corridor & Patio Area
Celebration of Psychometrika's 80th Anniversary (Join us for a champagne toast & cake at 6:10 p.m. located in the Pre-Function Corridor.)

WEDNESDAY, July 13

- 7:00 a.m. - 12:00 noon
07:00 - 12:00 **IMPS Registration Open**
Grand Ballroom: Pre-Function Corridor
- 7:00 a.m. - 8:30 a.m.
07:00 - 08:30 **Continental Breakfast**
Grand Ballroom: Pre-Function Corridor
- 8:00 a.m. - 9:30 a.m.
08:00 - 09:30 **Parallel Sessions, Wednesday AM 1**
Swannanoa
Item Response Theory
Chair: Brian Habing
Jeong Sep Sihm
Haruhiko Ogasawara
Meng-I Chang
- Grand Ballroom: Salon C**
Factor Analysis
Chair: Hao Wu
Francisco Abad
Hongli Li
Shaobo Jin
Youn-Jeng Choi

WEDNESDAY (continued)

8:00 a.m. - 9:30 a.m.
08:00 - 09:30

Parallel Sessions, Wednesday AM 1 (continued)

Victoria

Bayesian Statistical Inference

Chair: Elizabeth Patton

Fei Zhan

Katerina Marcoulides

Merijn Mestdagh

Michael Zweifel

Grand Ballroom: Salon A & B

Debate: Is The Concept of Equal Interval Scales in Educational Testing Attainable or Just a Myth?

Wim van der Linden vs. Derek Briggs

Chair: Terry Ackerman

Windsor Ballroom: Salon B

Structural Equation Modeling

Chair: Sara Finney

Holmes Finch

Fan Wallentin

Holger Brandt

Ross Jacobucci

Windsor Ballroom: Salon A

Diagnostic Classification Model

Chair: Jimmy de la Torre

Yan Sun

Youn Seon Lim

Yinghan Chen

Shuliang Ding

Charles Iaconangelo

Alexander

Multivariate Analysis

Chair: Wenchao Ma

Daniel McArtor

Ken Kelley

Seock-Ho Kim

Zhenqiu Lu

Joe Whitehurst

Cherokee

Computer-Based Testing

Chair: Xiao Liu

Dongmei Li

Sam Ye

Tianli Li

9:30 a.m. - 9:45 a.m.
09:30 - 09:45

Refreshment Break

Grand Ballroom: Pre-Function Corridor

9:45 a.m. - 10:45 a.m.
09:45 - 10:45

Keynote Speaker: Roderick Little

Grand Ballroom: Salon A & B

Some Recent Developments in the Analysis of Data with Missing Values

Chair: Carolyn Anderson

10:45 a.m. - 10:55 a.m.
10:45 - 10:55

Break

10:55 a.m. - 12:25 p.m.
10:55 - 12:25

Parallel Sessions, Wednesday AM 2

Alexander

Bayesian Item Response Theory Using Stata

Chuck Huber

WEDNESDAY (continued)

10:55 a.m. - 12:25 p.m.
10:55 - 12:25

Parallel Sessions, Wednesday AM 2 (continued)

Grand Ballroom: Salon A & B

Item Response Theory

Chair: Cherie Avent

Giulio Flore

Joseph Olsen

Larissa Smith

Wei Xu

James S. Roberts

Windsor Ballroom: Salon A

Causal Inference and Mediation

Chair: Fan Wallentin

Jee-Seon Kim

Johnson Li

Monica Morell

Oscar Gonzalez, Jr.

Patrick E. Shrout

Grand Ballroom: Salon C

Diagnostic Classification Model

Chair: Charles Iaconangelo

Aaron Hudson

Hans Friedrich Koehn

Michel Philipp

Youn Seon Lim

Swannanoa

Classification, Clustering, and Latent Class Analysis

Chair: Saed Qunbar

Yanyan Fu

Jimmy de la Torre

Seohyun Kim

Wenchao Ma

Oksana Naumenko

Victoria

Multidimensional Item Response Theory

Chair: Eren Halil Ozberk

Brian Habing

Eddie Ip

Ken A. Fujimoto

Steven A. Culpepper

Carolyn J. Anderson

Windsor Ballroom: Salon B

Model Fit, Comparison, and Diagnostics

Chair: Holmes Finch

Irini Moustaki

Jeremy Kyle Jennings

Michele Gallo

Doyoung Kim

Christine DiStefano

12:15 p.m. - 6:30 p.m.
12:15 - 18:30

Excursion: Biltmore House and Winery

Boxed lunches provided in the Hotel Lobby between 12:00 noon-12:45 p.m. Bus loading will line up in the Hotel Lobby starting at 12:15 p.m. Final bus departs at 1:00 p.m. sharp!

THURSDAY, July 14

- 7:30 a.m. - 3:30 p.m.
07:30 - 15:30 **IMPS Registration Open**
Grand Ballroom: Pre-Function Corridor
- 7:00 a.m. - 8:30 a.m.
07:00 - 08:30 **Continental Breakfast**
Grand Ballroom: Pre-Function Corridor
- 8:00 a.m. - 9:00 a.m.
08:00 - 09:00 **Keynote Speaker: Xiao-Li Meng**
Grand Ballroom: Salon A & B
Bayesian, Fiducial, and Frequentist (BFF): Best Friends Forever?
Chair: Wim van der Linden
- 9:00 a.m. - 9:45 a.m.
09:00 - 09:45 **Early Career Award Winner: David Magis**
Grand Ballroom: Salon A & B
Open Source Programming: A New Hope for Psychometric Research
Chair: Andries van der Ark
- 9:45 a.m. - 10:00 a.m.
09:45 - 10:00 **Refreshment Break**
Grand Ballroom: Pre-Function Corridor
- 10:00 a.m. - 11:30 a.m.
10:00 - 11:30 **Parallel Sessions, Thursday AM**
- Swannanoa**
Item Response Theory
Chair: Kathy Baker
Yong Luo
Barth Riley
Xue Zhang
- Grand Ballroom: Salon C**
Symposium 4: Noncognitive Assessment in Education and Workforce Selection
Chair: Patrick Kyllonen
Steve Stark
David Klieger
Jacob Seybert
Patrick Kyllonen
- Victoria**
Estimation and Computational Methods
Chair: Patrick Shrout
Alexander Schoemann
Alice M. Brawley
Mohan Dev Pant
Xiang Liu
- Cherokee**
Applications
Chair: Mariejke Timmerman
Jiyoon Park
Austin Cavanaugh
Ben Domingue
Yunxiao Chen
- Alexander**
Measurement Invariance and Differential Item Functioning
Chair: Oksana Naumenko
Levent Ertuna
JP Kim
Mo Zhang
Weiwei Cui
- Windsor Ballroom: Salon A**
Network Analysis
Chair: Bonne J.H. Zijlstra
Akinori Okada
Hudson F. Golino
Michaela Hoffman
Patrick Miller
Frank Busing
- Windsor Ballroom: Salon B**
Validity and Reliability
Chair: Dan Bolt
Dingjing Shi
Jacob Westfall
Katherine Jonas
Kurt F. Geisinger

THURSDAY (continued)

- 11:30 a.m. - 11:45 a.m.
11:30 - 11:45 **Break**
- 11:45 a.m. - 1:30 p.m.
11:45 - 13:30 **Psychometric Society Trivial Pursuit Luncheon**
Grand Ballroom: Salon A & B
- 1:30 p.m. - 3:00 p.m.
13:30 - 15:00 **Parallel Sessions, Thursday PM 1**
- Victoria**
Computer-Based Testing
Chair: Klaas Sijtsma
Halil Ibrahim Sari
Nathan Minchen
Yu Bao
- Windsor Ballroom: Salon B**
Item Response Theory
Chair: Eddie Ip
Jiaqi Zhang
Dandan Liao
Lale Khorramdel
Wilco H. M. Emons
- Grand Ballroom: Salon C**
Structural Equation Modeling
Chair: Julianne Zemaitis
Zachary Fisher
Zijun Ke
Robyn Pitts
- Alexander**
Estimation and Computational Methods
Chair: Alice Brawley
David R. King
Matthias von Davier
Sung-Hyuck Lee
Youngshil Paek
- Windsor Ballroom: Salon A**
Symposium 5: Statistical Consulting
Chair: Terry Ackerman
Carolin Strobl
Ric Luecht
Wim van der Linden
Andries van der Ark
Dan Bolt
- Swannanoa**
Measurement Invariance and Differential Item Functioning
Chair: Stephen Stark
David Magis
Graham G. Rifenbark
Yu Bai
Yuxi Qiu
- Cherokee**
Equating
Chair: Lauren Harrell
Keyin Wang
Gabriel Wallin
Valentina Sansivieri
- 3:00 p.m. - 3:15 p.m.
15:00 - 15:15 **Refreshment Break**
Grand Ballroom: Pre-Function Corridor

THURSDAY (continued)

3:15 p.m. - 4:00 p.m.
15:15 - 16:00

Invited Speakers:
Ellen Hamaker, Ed Merkle

Grand Ballroom: Salon A & B
Ellen Hamaker: At the Frontiers of Dynamic Multilevel Modeling
Chair: Jee Seon Kim

Grand Ballroom: Salon C
Ed Merkle: Bayesian SEM: Some Computational Advances and Potential Pitfalls
Chair: Sophia Rabe-Hesketh

4:00 p.m. - 4:10 p.m.
16:00 - 16:10

Break

4:10 p.m. - 5:40 p.m.
16:10 - 17:40

Parallel Sessions, Thursday PM 2

Grand Ballroom: Salon C
Symposium 6: Methodological Advances for Computer-Based International Assessments
Chair: Lale Khorramdel
Matthias von Davier
Yunxiao Chen
Hyo Jeong Shin
Qiwei He

Grand Ballroom: Salon A & B
Psychometrika Anniversary Session 2
Chair: Willem Heiser
Larry Hubert
Jacqueline Meulman
Charles Lewis
Willem Heiser

Victoria
Item Response Theory
Chair: Wilco Emons
Jaehwa Choi
Matthew D. Zeigenfuse
Wes Bonifay
Michelle D. Barrett

Alexander
Diagnostic Classification Model
Chair: Oksana Naumenko
Matthew J. Madison
Susan Embretson
Thorben Huelmann
Yating Zheng

Windsor Ballroom: Salon A
Applications
Chair: Gunter Maris
Yao Xiong
Iris Yocarini
Hongli Li
Peter Halpin

Windsor Ballroom: Salon B
Latent Class Analysis
Chair: Eren Halil Oz
Tahsin Oğuz Başoğlu-Ege
Gongjun Xu
Stephen L. France

Swannanoa
Networking Session on Analysis of Intensive Behavioral Data from Device-Enabled Studies
Chair: Ted Walls
Mariejke Timmerman
Wen Chung Wang

FRIDAY, July 15

7:30 a.m. - 3:30 p.m.
07:30 - 15:30

IMPS Registration Open
Grand Ballroom: Pre-Function Corridor

7:00 a.m. - 8:30 a.m.
07:00 - 08:30

Continental Breakfast
Grand Ballroom: Pre-Function Corridor

8:30 a.m. - 9:30 a.m.
08:30 - 09:30

Career Award Speaker:
Wim van der Linden
Grand Ballroom: Salon A & B
Big Data, Small Steps
Chair: Terry Ackerman

9:30 a.m. - 9:45 a.m.
09:30 - 09:45

Refreshment Break
Grand Ballroom: Pre-Function Corridor

9:45 a.m. - 11:15 a.m.
09:45 - 11:15

Parallel Sessions, Friday AM

Windsor Ballroom: Salon B
Symposium 7: The Development and Use of Noncognitive Assessment in K-12
Chair: Jinghua Liu
Patrick Kyllonen
Jinghua Liu
Katie Buckley
Jiyun Zu
Nathan Kuncel

Grand Ballroom: Salon A & B
Psychometrika Anniversary Session 3: Past Editors
Chair: Irini Moustaki
Larry Hubert
Willem Heiser
Ulf Bockenolt
Brian Junker
Shizuhiko Nishisato

Windsor Ballroom: Salon A
Categorical Data Analysis
Chair: Holmes Finch
Haiyan Liu
Jordan Stevens
Stella Kim
Young Koungh Kim

Grand Ballroom: Salon C
Multilevel/Hierarchical/Mixed Methods
Chair: Brooke Magnus
Cees Glas
Jason D. Rights
Joshua Pritikin
Marjolein Fokkema

Alexander
Missing Data
Chair: Matthias von Davier
Joost Van Ginkel
Myrsini Katsikatsou
Sewon Kim

Victoria
Symposium 8: Advanced Statistical Power Analysis in Real Scenarios
Chair: Ke-Hai Yuan
Han Du
Miao Yang
Yujiao Mai
Zhiyong Zhang
Ke-Hai Yuan

Swannanoa
Item Response Theory
Chair: Jessica Jacovidis
Chen Li
Frederik Coomans
James Ramsay
Tim Moses
J. Patrick Meyer

FRIDAY (continued)

11:15 a.m. - 11:25 a.m.
11:15 - 11:25

Break

11:25 a.m. - 12:10 p.m.
11:25 - 12:10

Invited Speakers: Steve Reise, Mike Cheung

Grand Ballroom: Salon A & B
Steve Reise: Is the Bifactor Model a Better Model or is It Just Better at Modeling Implausible Responses? Application of Iteratively Reweighted Least Squares to the Rosenberg Self-Esteem Scale

Chair: David Thissen

Grand Ballroom: Salon C
Mike Cheung: Integrating Meta-Analysis Within Structural Equation Modeling: Theories and Applications
Chair: Cees Glas

12:10 p.m. - 1:30 p.m.
12:10 - 13:30

Lunch on the town (on your own)

1:30 p.m. - 3:00 p.m.
13:30 - 15:30

Parallel Sessions, Friday PM

Grand Ballroom: Salon A & B
Item Response Theory
Chair: Frederik Coomans
Gunter Maris
Jinwang Zou
Rudolf Debelak
Scott Monroe
Xin Xin

Victoria
Symposium 9: Current Advances in Confidence Interval and Prediction Interval Estimation
Chair: Jolynn Pek
Jolynn Pek
R. Philip Chalmers
Yang Liu
Chuchu Cheng
Hao Wu

Windsor Ballroom: Salon A
Longitudinal Data Analysis
Chair: Steve Stark
Casper Albers
Holmes Finch
Kimberly Ward
Marieke E. Timmerman
Sarfaraz Serang

Alexander
Equating
Chair: Robyn Pitts
Hyung Jin Kim
Jorge González
Lauren Harrell
Marie Wiberg

Windsor Ballroom: Salon B
Multilevel/Hierarchical/Mixed Methods
Chair: Yanyan Fu
Brooke E. Magnus
Eric F. Lock
Yasuo Miyazaki
Yi Lu

Grand Ballroom: Salon C
Classical Test Theory
Chair: Andries van der Ark
Ernest C. Davenport, Jr.
Klaas Sijtsma
Kyung Yong Kim
Won-Chan Lee

FRIDAY (continued)

1:30 p.m. - 3:00 p.m.
13:30 - 15:30

Membership Committee Open Meeting

Swannanoa
Chair: Ted Walls
Mariejke Timmerman
Wen Chung Wang
Sophia Rabe-Hesketh

3:00 p.m. - 3:15 p.m.
15:00 - 15:15

Refreshment Break **Grand Ballroom: Pre-Function Corridor**

3:15 p.m. - 4:15 p.m.
15:15 - 16:15

Presidential Address: Terry Ackerman
Grand Ballroom: Salon A & B
Differential Item Functioning From a Multi-Dimensional Item Response Theory Perspective
Chair: Anders Skrondal

4:15 p.m. - 5:00 p.m.
16:15 - 17:00

Awards, Preview of IMPS 2017, and Closing Remarks

Grand Ballroom: Salon A & B

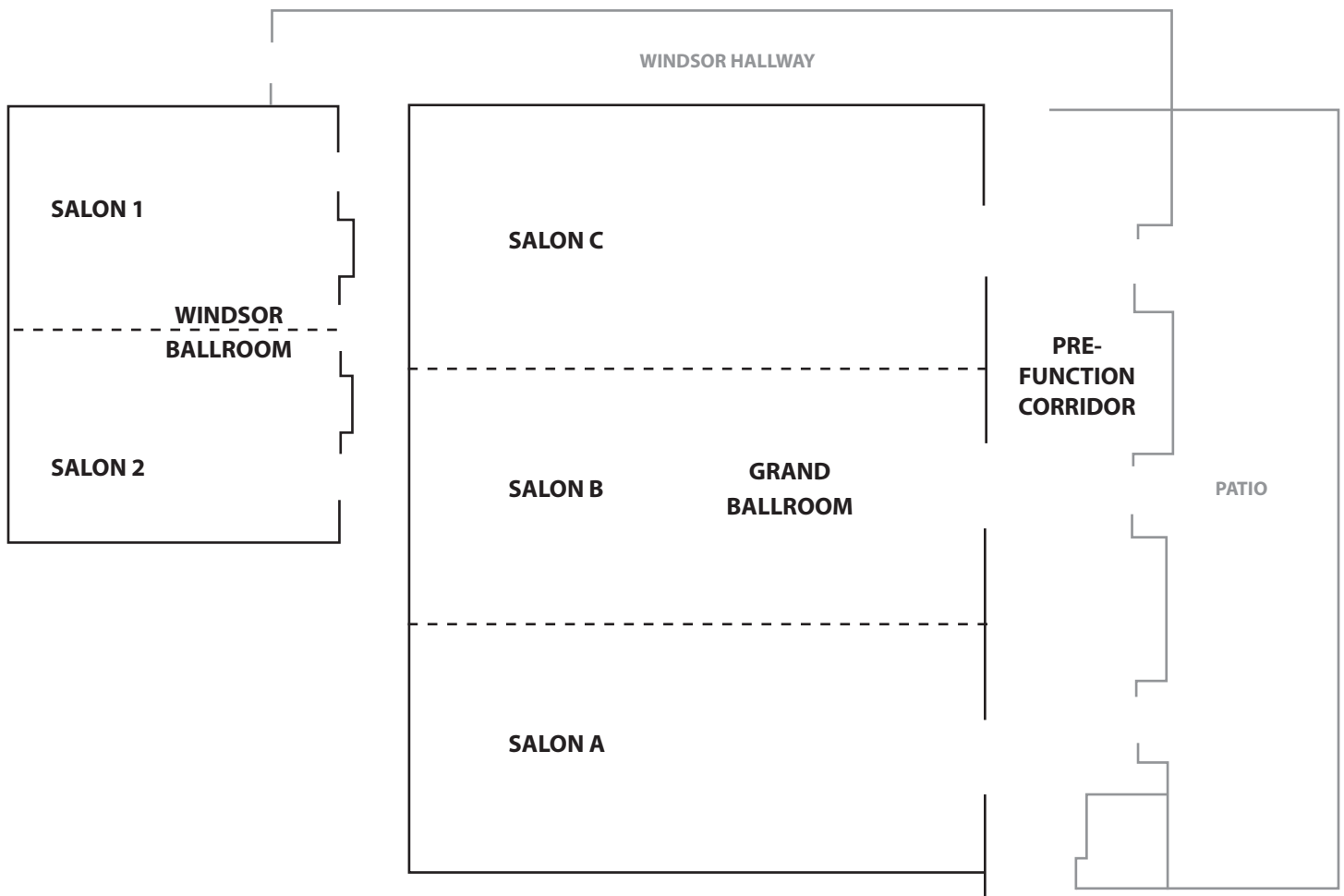
6:30 p.m. - 9:00 p.m.
18:30 - 21:00

Closing Banquet Reception
Off-site Location: Omni Grove Park Inn
Transportation is provided. Meet in the Hotel Lobby anytime between 5:00 p.m.-7:30 p.m.
Return Shuttles will be available from 8:00 p.m. to 10:15 p.m.



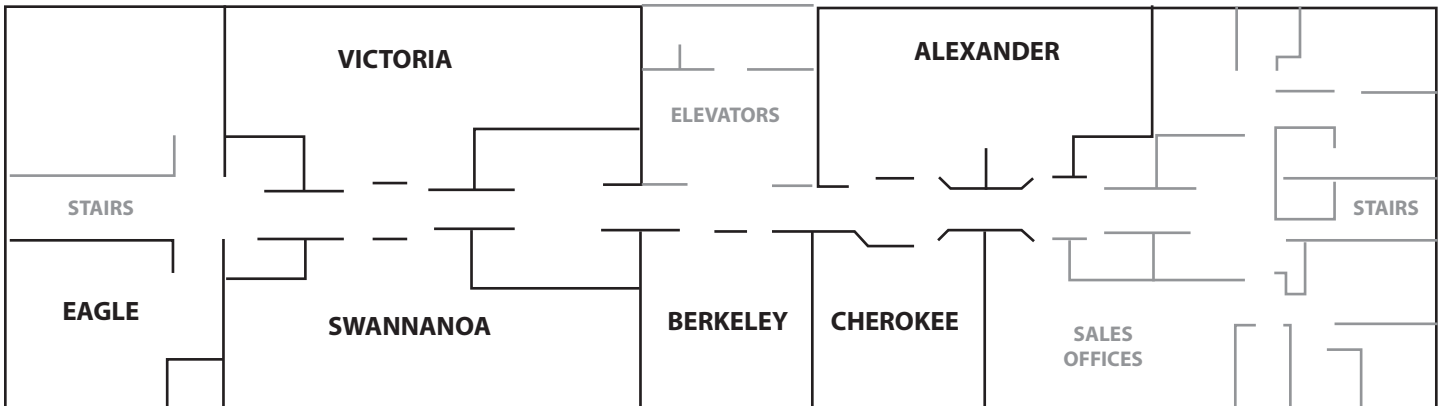
Floor Plans

LOBBY LEVEL

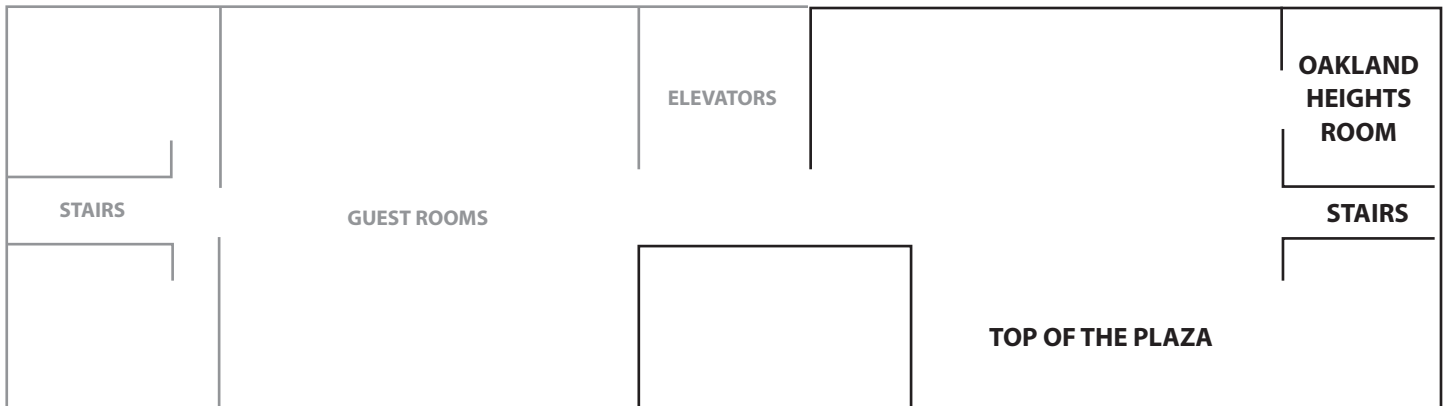


Floor Plans

SECOND FLOOR



12TH FLOOR



SHORT COURSES

The following full-day, pre-conference short courses will be offered on Monday, July 11, 2016, 9:00 a.m.-4:00 p.m. (09:00-16:00):

Workshop 1: Computerized Adaptive Testing and Multistage Testing with R

Presenters:
David Magis, University of Liège, Brussels, Belgium
Alina A. von Davier, Educational Testing Service, Princeton, NJ, USA
Duanli Yan, Educational Testing Service, Princeton, NJ, USA

Workshop 2: flexMIRT®: Flexible Multilevel Multidimensional Item Analysis and Test Scoring

Presenters:
Carrie R. Houts, Vector Psychometric Group, LLC
RJ Wirth, Vector Psychometric Group, LLC

Workshop 3: Bayesian Modeling Using Stan

Presenters:
Daniel Furr, University of California at Berkeley, CA, USA
Ben Goodrich, Columbia University, New York, NY, USA

KEYNOTES



Jeroen Vermunt
Tilburg University, The Netherlands
SIMPLIFYING THE USE OF LATENT CLASS ANALYSIS BY MEANS OF STEPWISE MODELING APPROACHES

July 12, 2016, 8:15 a.m. - 9:15 a.m. (08:15 - 09:15)



Xiao-Li Meng
Harvard University, MA, USA
BAYESIAN, FIDUCIAL, AND FREQUENTIST (BFF): BEST FRIENDS FOREVER?

July 14, 2016, 8:00 a.m. - 9:00 a.m. (08:00 - 09:00)



Yang Liu
University of California, Merced, CA, USA
2016 Psychometric Society Dissertation Prize Co-Winner
GENERALIZED FIDUCIAL INFERENCE FOR GRADED RESPONSE MODELS

July 12, 2016, 11:10 a.m. - 11:40 a.m. (11:10 - 11:40)



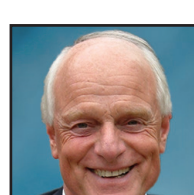
David Magis
University of Liège, Belgium
2016 Psychometric Society Early Career Award
OPEN SOURCE PROGRAMMING: A NEW HOPE FOR PSYCHOMETRIC RESEARCH

July 14, 2016, 9:00 a.m. - 9:45 a.m. (09:00 - 09:45)



Stijn Verdonck
KU Leuven, Brussels, Belgium
2016 Psychometric Society Dissertation Prize Co-Winner
ADVANCES IN CHOICE RESPONSE TIME MODELING: NON-LINEARITY, EFFICIENT COMPUTATION, AND NON-DECISION TIME

July 12, 2016, 11:10 a.m. - 11:40 a.m. (11:10 - 11:40)



Wim J. van der Linden
Pacific Metrics Corporation, Monterey, CA, USA
2016 Psychometric Society Career Award
BIG DATA, SMALL STEPS

July 15, 2016, 8:30 a.m. - 9:30 a.m. (08:30 - 09:30)



Roderick Little
University of Michigan, Ann Arbor, MI, USA
SOME RECENT DEVELOPMENTS IN THE ANALYSIS OF DATA WITH MISSING VALUES

July 13, 2016, 9:45 a.m. - 10:45 a.m. (09:45 - 10:45)



Terry Ackerman
University of North Carolina, Greensboro, NC, USA
Presidential Address
DIFFERENTIAL ITEM FUNCTIONING FROM A MULTIDIMENSIONAL ITEM RESPONSE THEORY PERSPECTIVE

July 15, 2016, 3:15 p.m. - 4:15 p.m. (15:15 - 16:15)

INVITED SPEAKERS



Ric Luecht

The University of North Carolina,
Greensboro, USA
ENGINEERING DESIGN IN THE
ASSESSMENT WORLD: A NEW PARADIGM
FOR TEST DESIGN AND DEVELOPMENT
WITH PSYCHOMETRIC IMPLICATIONS

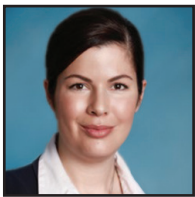
July 12, 3:30 p.m. - 4:15 p.m. (15:30-16:15)



Ellen Hamaker

Utrecht University, The Netherlands
AT THE FRONTIERS OF DYNAMIC MULTI-
LEVEL MODELING

July 14, 3:15 p.m. - 4:00 p.m. (15:15-16:00)



Carolin Strobl

University of Zurich, Switzerland
MODEL-BASED RECURSIVE PARTI-
TIONING OF PSYCHOMETRIC MODELS: A
DATA-DRIVEN APPROACH FOR DETECTING
HETEROGENEITY IN MODEL PARAMETERS

July 12, 3:30 p.m. - 4:15 p.m. (15:30-16:15)



Mike Cheung

National University of Singapore
INTEGRATING META-ANALYSIS WITHIN
STRUCTURAL EQUATION MODELING:
THEORIES AND APPLICATIONS

July 15, 11:25 a.m. - 12:10 p.m. (11:25-12:10)



Edgar Merkle

University of Missouri, Columbia, USA
BAYESIAN SEM: SOME COMPUTATIONAL
ADVANCES AND POTENTIAL PITFALLS

July 14, 3:15 p.m. - 4:00 p.m. (15:15-16:00)



Steven P. Reise

University of California, Los Angeles, USA
IS THE BIFACTOR MODEL A BETTER
MODEL OR IS IT JUST BETTER AT
MODELING IMPLAUSIBLE RESPONSES?
APPLICATION OF ITERATIVELY
REWEIGHTED LEAST SQUARES TO THE
ROSENBERG SELF-ESTEEM SCALE

July 15, 11:25 a.m. - 12:10 p.m. (11:25-12:10)

SPECIAL SESSIONS

Psychometrika Anniversary Session 1

Chair: Larry Hubert

Presenters:

William Heiser

Klaas Sijtsma

Hans-Friedrich Kohn

Larry Hubert

July 12, 2016, 4:25 p.m. - 5:40 p.m. (16:25 - 17:40)

Psychometrika Anniversary Session 2

Chair: Willem Heiser

Presenters:

Larry Hubert

Jacqueline Meulman

Charles Lewis

Willem Heiser

July 14, 2016, 4:10 p.m. - 5:40 p.m. (16:10 - 17:40)

DEBATE: IS THE CONCEPT OF EQUAL INTERVAL SCALES IN EDUCATIONAL TESTING ATTAINABLE OR JUST A MYTH?

Chair: Terry Ackerman

Co-Presenter:

Wim J. van der Linden

Pacific Metrics Corporation, Monterey, CA, USA
THE MYTH OF EQUAL UNITS OF MEASUREMENT

Co-Presenter:

Derek C. Briggs

University of Colorado, Boulder, USA

PSYCHOMETRICS, MEASUREMENT, AND OBTAINABLE GOALS

July 13, 2016, 8:00 a.m. - 9:30 a.m. (8:00 - 09:30)

Psychometrika Anniversary Session 3: Past Editors

Chair: Irini Moustaki

Presenters:

Irini Moustaki

Larry Hubert

Willem Heiser

Ulf Bockenolt

Brian Junker

Shizuhiko Nishisato

July 15, 2016, 9:45 a.m. - 11:15 a.m. (09:45 - 11:15)

PROGRAM EVENTS

Group Photo

Tuesday, July 12: 12:15 p.m.-12:45 p.m. (12:15-12:45)
Pack Square Park Amphitheater

Please meet promptly following the Business Meeting, in the Grand Ballroom Pre-Function Corridor and the Patio Area at the Renaissance Hotel.

Promptly at 12:20 p.m., the group will walk together to the Pack Square Park Amphitheater located across the street from the Renaissance Hotel. At 12:30 p.m., a conference-sponsored group photo will be taken. After the group photo, attendees are on their own for lunch from 12:45 p.m.-1:45 p.m.

The group photo will be posted on the Society website for attendees to download after the conference.



Welcome to Asheville Poster Reception and *Psychometrika* 80th Anniversary Toast

Tuesday, July 12: 6:00 p.m.-8:00 p.m. (18:00-20:00),
6:10 p.m. (18:10): 80th Anniversary of *Psychometrika*
Champagne Toast

Grand Ballroom: Pre-Function Corridor and Patio
Grand Ballroom: Salon C
Windsor Ballroom: Salon A & B
Windsor Hallway

Join the Society at the Renaissance Hotel for a wonderful evening to welcome meeting attendees, explore a diverse collection of research at the conference poster session, and celebrate the 80th Anniversary of *Psychometrika*. Discuss topics with your peers that are sure to pique your interest in a casual, fun, and informal setting. The event includes an hors d'oeuvres reception and cash bar. Authors will be standing by their posters between 6:00 p.m. and 8:00 p.m. (18:00-20:00). This event is also open to meeting attendee guests at no additional charge.



PROGRAM EVENTS

IMPS Excursion Trip

Wednesday, July 13: 12:00 noon-6:30 p.m. (12:00-18:30)
Visit the Biltmore Estates in Asheville, NC

Join the Society and fellow conference-goers on a half-day excursion to one of Asheville's best tourist attractions. Transportation will depart from the Renaissance Asheville Hotel. Boxed lunches will be available starting at 12:00 noon, and transportation will begin at 12:15 p.m. (Buses will depart as they fill on a first-come, first-served basis.)

The Biltmore Estate was built over a period of six years in the late 1800s and opened to the public in 1930. The sprawling 8,000-acre estate features 250 rooms built in the French Renaissance style and houses its own vineyard and The Biltmore Estate Wine Company. In addition to tours of the estate and grounds, the property also features two inns, a cottage, and Antler Hill Village, which feature an exhibition of the estate's history, a farm, and an outdoor adventure center.

A detailed event timeline for transportation and tour schedules will be given to each guest as they board their coach shuttle bus. Please pay close attention to the bus tour guide for specific tour schedules, Biltmore details, and your specific bus departure information to and from the excursion site.

Meet in the Renaissance Asheville Hotel Lobby between 12:00 noon and 1:00 p.m. to pick up your boxed lunch and depart for the excursion. The last bus will depart at 1:00 p.m. sharp! All attendees should line up in the Renaissance Hotel Lobby with the group they would like to sit with on the bus. Once the attendee and their guests board the bus, they will ride the same bus all day and will be scheduled the same tour times. Each bus will be numbered. Attendees will receive a ticket with their bus assignment as they enter their coach bus. If questions arise on site, refer to your tour bus guide.

Excursion Schedule:

12:00 noon-1:00 p.m. (12:00-13:00)

Pick up boxed lunch

(Attendees may choose to eat their lunch on the way to the Biltmore Estates, or wait to have a picnic lunch on the Estate grounds.)

12:15 p.m.-1:00 p.m. (12:15-13:00)

Load buses – Final bus departs at 1:00 p.m. sharp!

12:15 p.m.-1:15 p.m. (12:15-13:15)

Transfer to Biltmore Estates

(The guide on each coach will instruct guests where to go and give him or her an agenda for a specific house entry tour time.)

1:15 p.m.-4:30 p.m. (13:15-16:30)

Visit Biltmore Estates: Biltmore House Tour, Biltmore Gardens, and Shopping.

(Attendees, please pay close attention to your specific house entry time noted.)

Optional: Attendees can buy (on their own) The Audio Guided House Tour upon admission for an additional \$10.70.

3:45 p.m.-4:30 p.m. (15:45-16:30)

Transfer to Antler Hill Village and Winery

(Attendees, please pay close attention to your specific bus departure timeline.)

3:45 p.m.-6:15 p.m. (15:45-18:15)

Visit Antler Hill Village and Winery

(Guests are encouraged also to visit the Farm area, the Legacy Area, enjoy the shopping, as well as the Winery. All guests must be 21 or older to participate in the wine tasting.)

5:45 p.m.-6:15 p.m. (17:45-18:15)

Load buses at the Antler Hill Village and Winery

(Attendees, please pay close attention to your specific bus departure timeline to load and depart for the Renaissance Hotel.)

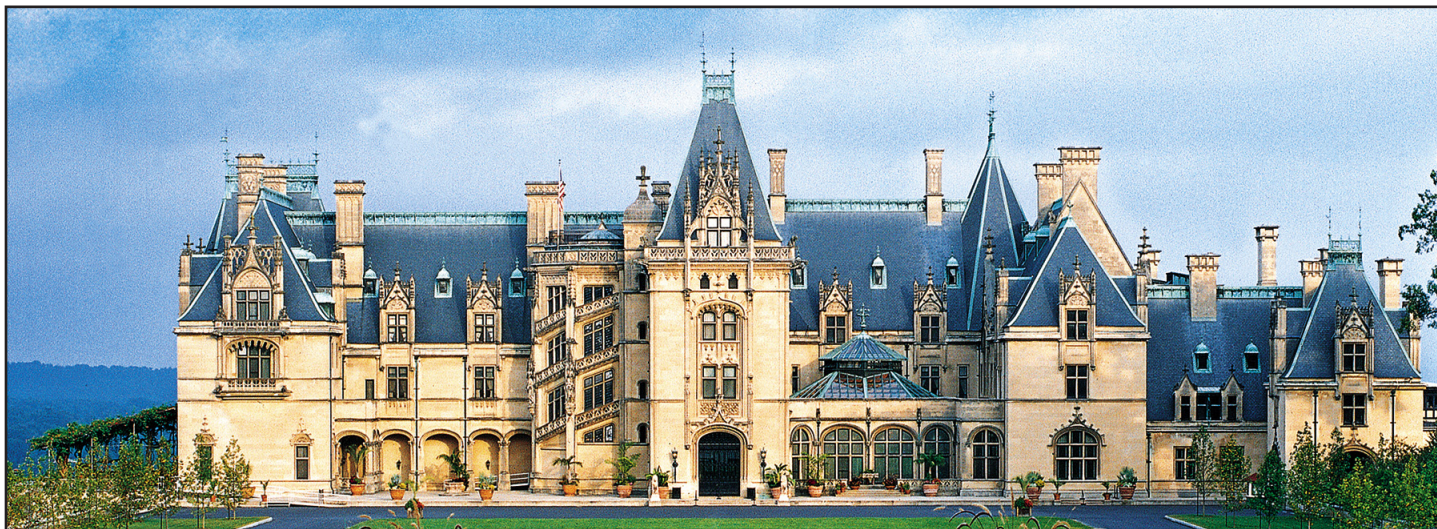


Photo courtesy of bringfido.com

PROGRAM EVENTS

Closing Banquet Reception

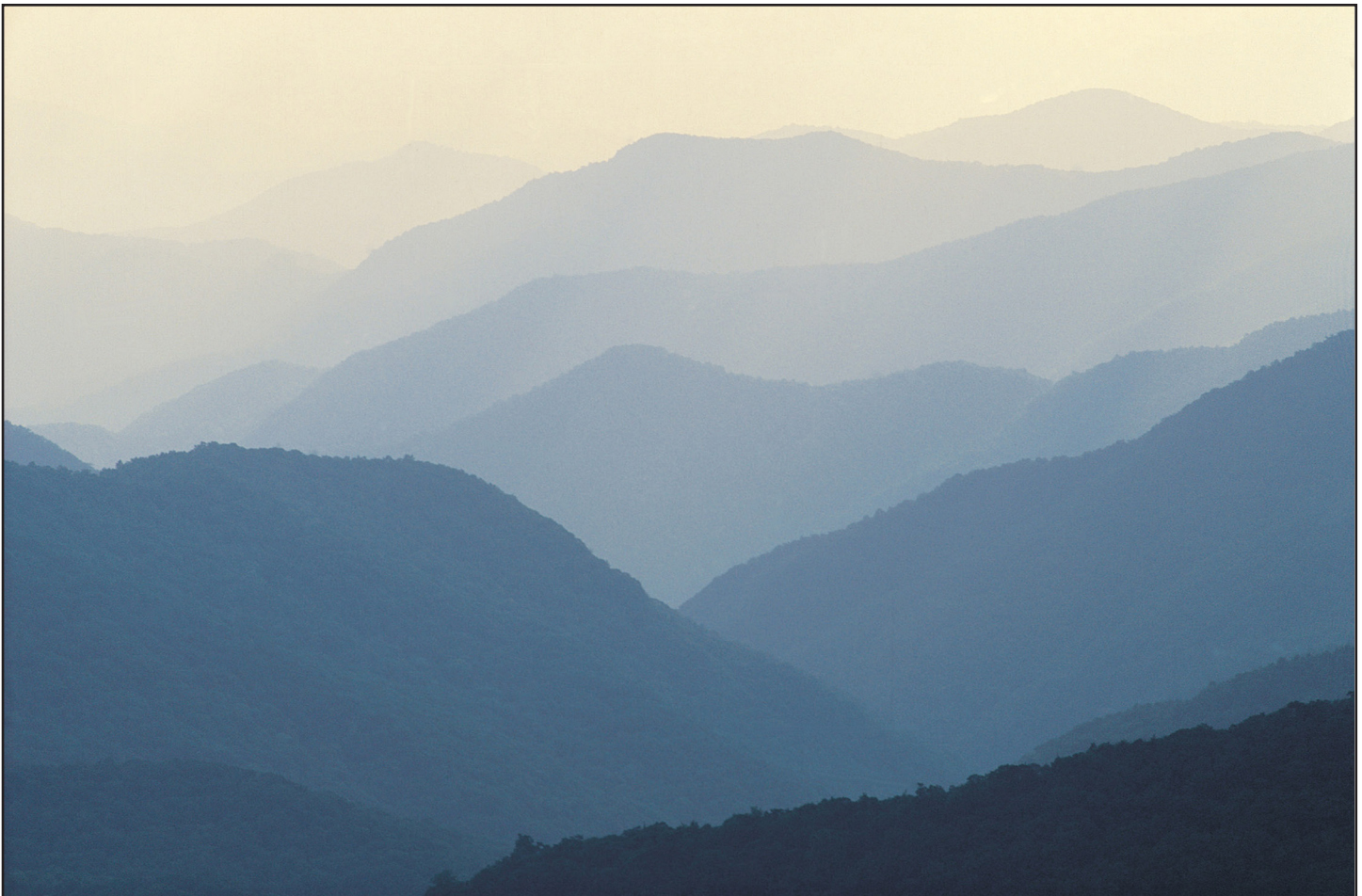
Friday, July 15: 6:30 p.m.-9:00 p.m. (18:30-21:00)
Omni Grove Park Inn
Sammons Wing: Skyline and Mountainview Terrace

Join us at the historic Omni Grove Park Inn for a final banquet reception, cash bar, and networking with fellow attendees. The Society has arranged two beautiful locations in the Skyline banquet room connected to the Mountainview Terrace for the closing banquet reception. No formal closing remarks will take place; therefore, attendees can choose to mingle, enjoy delicious food and beverage, and take in the views of this spectacular event location.

Transportation will be provided to and from the Omni Grove Park Inn. A detailed schedule is noted on page 17.

Guests also can choose to arrive early and/or partake during the banquet reception in a self-guided "Historic Walk" throughout the resort. Detailed information at the following: <https://www.psychometricsociety.org/IMPS-2016-Historic-Walking-Tour>

Your guest is also welcome to attend the banquet reception for an additional fee. Stop by the Society registration desk located in the Grand Ballroom: Pre-Function Corridor of the Renaissance Hotel to inquire at least 24-hours prior to the banquet event.



PROGRAM EVENTS

COACH SHUTTLE TO OMNI GROVE PARK INN FROM THE RENAISSANCE HOTEL

Buses will be loaded in the lobby area. A coordinator will be available on site to assist at both locations. The times noted below are approximate. Depending on traffic, road construction, weather and/or other related issues, shuttles will attempt to stay as close to this schedule as possible, but we please ask for your patience if there are unexpected delays. The Closing Banquet Reception is located in the Skyline and Mountainview Terrace. The banquet is from 6:30 p.m. to 9:00 p.m. Shuttle transportation is available between 5:00 p.m.-10:15 p.m.

COACH #1

5:00 p.m. Coach #1 – Arrives at the Renaissance Hotel
5:30 p.m. Coach #1 – Departs for the Omni Grove Park Inn:
Sammons Wing
5:45 p.m. Coach #1 – Arrives at the Omni Grove Park Inn:
Sammons Wing
6:05 p.m. Coach #1 – Returns to the Renaissance Hotel
6:15 p.m. Coach #1 – Departs for the Omni Grove Park Inn
(or when loaded)
6:30 p.m. Coach #1 – Arrives Grove Park Inn: Sammons Wing
6:50 p.m. Coach #1 – Returns to the Renaissance Hotel
7:10 p.m. Coach #1 – Departs with final shuttle before return
shuttles begin
8:00 p.m. Coach #1 – Sammons Wing pick-up area.
Shuttle will be available to return to the Renaissance Hotel.
(Departure shuttles will run every 15 minutes for return per
itineraries of each coach. Final shuttle run will leave at
10:15 p.m. sharp. Guests are on their own after this time.)

Coach #2

5:00 p.m. Coach #2 – Arrives at the Renaissance Hotel
5:45 p.m. Coach #2 – Departs for the Omni Grove Park Inn:
Sammons Wing
6:00 p.m. Coach #2 – Arrives at the Omni Grove Park Inn:
Sammons Wing
6:20 p.m. Coach #2 – Returns to the Renaissance Hotel
6:40 p.m. Coach #2 – Departs for Omni Grove Park Inn:
Sammons Wing
7:00 p.m. Coach #2 – Returns to the Renaissance Hotel
7:30 p.m. Coach #2 – Loads & departs for Omni Grove Park Inn:
Sammons Wing
8:15 p.m. Coach #2 – Sammons Wing pick-up area.
Shuttle will be available to return to the Renaissance Hotel.
(Departure shuttles will run every 15 minutes for return per
itineraries of each coach. Final shuttle run will leave at
10:15 p.m. sharp. Guests are on their own after this time.)

Coach #3

5:30 p.m. Coach #3 – Arrives at the Renaissance Hotel
6:00 p.m. Coach #3 – Departs for the Omni Grove Park Inn:
Sammons Wing
6:15 p.m. Coach #3 – Arrives at the Omni Grove Park Inn:
Sammons Wing
6:35 p.m. Coach #3 – Returns to the Renaissance Hotel
6:45 p.m. Coach #3 – Departs for the Omni Grove Park Inn:
Sammons Wing
7:00 p.m. Coach #3 – Arrives at the Omni Grove Park Inn:
Sammons Wing
7:20 p.m. Coach #3 – Returns to the Renaissance Hotel for
final pick up
7:30 p.m. Coach #3 – Departs with final shuttle before
return shuttles begin
8:30 p.m. Coach #3 – Sammons Wing pick-up area.
Shuttle will be available to return to the Renaissance Hotel.
(Departure shuttles will run every 15 minutes for return per
itineraries of each coach. Final shuttle run will leave at
10:15 p.m. sharp. Guests are on their own after this time.)

Coach #4

5:30 p.m. Coach #4 – Arrives at the Renaissance Hotel
6:10 p.m. Coach #4 – Departs for the Omni Grove Park Inn:
Sammons Wing
6:25 p.m. Coach #4 – Arrives at the Omni Grove Park Inn:
Sammons Wing
6:45 p.m. Coach #4 – Returns to the Renaissance Hotel
6:50 p.m. Coach #4 – Departs for Omni Grove Park Inn:
Sammons Wing
7:05 p.m. Coach #4 – Arrives Omni Grove Park Inn:
Sammons Wing
7:20 p.m. Coach #4 – Returns to the Renaissance Hotel
7:40 p.m. Coach #4 – Departs for Omni Grove Park Inn:
Sammons Wing
8:45 p.m. Coach #4 – Sammons Wing pick-up area.
Shuttle will be available to return to the Renaissance Hotel.
(Departure shuttles will run every 15 minutes for return per
itineraries of each coach. Final shuttle run will leave at
10:15 p.m. sharp. Guests are on their own after this time.)

GENERAL CONFERENCE INFORMATION

IMPS 2016 Job Fair

New this year: IMPS 2016 is holding a Job Fair at which graduate students can talk with employers about advertised positions. The Job Fair is open throughout the conference when the Registration Desk is open.

Graduate students who want to participate should send via email a two-page pdf of their vita, including contact information where they can be reached while at IMPS 2016. Or, they can drop off their vita at the IMPS Registration Desk on site. The information will be stored on file for only employers or their representatives to access.

IMPS 2016 sponsors may submit descriptions of employment opportunities at their respective companies, along with contact information. This information will be stored on file for graduate students to access.

To participate in the Job Fair, please email Ashley Alba: aalba@reesgroupinc.com.

Job Fair information also will be available at the IMPS 2016 Registration Desk located in the Grand Ballroom: Pre-Function Corridor at the Renaissance Hotel.

Name Badge Policy

Conference name badges are required for entrance to all conference events.

Registration & Information Desk

Conference Registration and information desk will be available in the Grand Ballroom: Pre-Function Corridor of the Renaissance Hotel throughout the Annual Meeting, July 12 to July 15. A representative from the National Office is available to offer assistance during the conference to answer questions, renew memberships, or assist those interested in joining the Psychometric Society. To join online go to: <https://psychometricsociety.org/user/register>.

Hours of Operation:

Monday, July 11
7:45 a.m.-9:45 a.m. (07:45-09:45)
(Short Course Workshops)

Tuesday, July 12
7:00 a.m.-5:00 p.m. (07:00-17:00)

Wednesday, July 13
7:00 a.m.-12:00 noon (07:00-12:00)

Thursday, July 14
7:30 a.m.-3:30 p.m. (07:30-15:30)

Friday, July 15
7:30 a.m.-3:30 p.m. (07:30-15:30)

Information for Presenters

Copies

If you plan to hand out paper copies during your presentation, you are responsible for copying and providing them at the conference. There are NO conference-sponsored copy machines for your use. Presenters are welcome to copy/print on site at the Renaissance Hotel. The first 20 copies are complimentary; each additional page (one-sided copies) is 20 cents per page. The front desk staff can assist with this request.

Session Rooms

All session rooms will be equipped with an LCD video projector, PC computer with DVD drive, USB hub, Internet connection, audio for the computer, a projection screen, wireless lavalier microphone, mouse and slide advancer, laser pointer, and a podium with a microphone. A MAC computer is available on request at least 24 hours prior to a presenter's scheduled lecture time. Please arrange this on site through the Society Registration Desk, as they will connect speakers with an audiovisual technician. Presenters are also welcome to bring their own laptop (and own connection cords) to connect with the session room LCD video projector. Each meeting room will provide one PC computer (with English keyboard) with the following software:

Windows 7: Office 2010, IE 10, Firefox, Chrome, Acrobat Reader XI, iTunes 11, QuickTime 7.7.5, VLC 2.0.6.

Mac OS X 10.8.4: Office 2011, Firefox, Chrome, Safari 6.0.5, iTunes 11, VLC 2.0.5.

If you need assistance prior, during, and/or after a presentation, you may request assistance from the Society audiovisual technician team, who is on call to assist you. Contact an IMPS Session Room Volunteer and/or the Society Registration Desk will be able to connect you with a technician.

Speaker and Presenter Testing and Practice Room

Speakers may practice and/or test their presentations using the Speaker Practice Room and computer from 7:00 a.m. - 5:00 p.m. daily on the 12th Floor of the Renaissance Hotel in the **Oakland Heights Room**. A PC will be available for speaker use to test and practice on a first-come, first-served basis.

Poster Session

Poster presenters may put up their posters on Tuesday, July 12, from 4:00 p.m.-6:00 p.m., and authors must stand with their poster from 6:00 p.m.-8:00 p.m. Authors should remove their posters following the session by 8:30 p.m. Any posters not removed after the session will be kept at the conference Registration Desk until Friday, July 15, at 3:30 p.m., and then will be recycled by the Renaissance Hotel.

GENERAL CONFERENCE INFORMATION

Complimentary Conference Meals & Receptions

Continental Breakfast will be offered daily at the Renaissance Hotel from 7:00 a.m.-8:30 a.m. The conference will also provide morning and afternoon beverage service during the session breaks. The local area has several downtown lunch location options to pick from and walk to; therefore, lunch will be on your own daily, except on Thursday, July 14, from 11:45 a.m. - 1:30 p.m. On Thursday, join fellow attendees for a buffet luncheon during the Psychometric Society Trivial Pursuit event over the lunch hour. [A list of Downtown Restaurants.](#) Tuesday night from 6:00 p.m.-8:00 p.m. will feature hors d'oeuvres and a cash bar during the Welcome Poster Reception. Lastly, Friday evening is the Closing Banquet Reception, which will be located at the Omni Park Garden Inn and will feature an array of reception food, and a cash bar to enjoy with fellow attendees. See your conference schedule for specific times and locations.

Society Conference Message Board

The Conference Message Board is located near the Registration Desk at the Renaissance Hotel. Feel free to post job vacancies, messages for colleagues, announcements, and/or other items of interest.

Small Group Meeting Space

Meeting space with a small board table has been reserved for unexpected meetings of conference attendees. We encourage you to take advantage of having your colleagues in one place and the opportunity to meet face-to-face. The Society has reserved space at the Renaissance Hotel on the 12th Floor, **Top of the Plaza** meeting room. It will be available on Tuesday through Friday on a first-come, first-served basis. To sign up and use this space, stop by the Society Registration Desk to check availability.

Special Accommodations

If you require special accommodations and/or have special dietary needs during the conference, please visit the National Office staff located at the Registration Desk in the **Grand Ballroom: Pre-Function Corridor** of the Renaissance Hotel.

Conference Attire

Business casual attire is suggested for the conference but is not mandatory. We recommend bringing a sweater or jacket to the conference, which is kept quite cool inside the hotel. All sessions will be located in the Renaissance Hotel, but attendees may choose to leave during the lunch hour. It is recommended to bring comfortable walking shoes, an umbrella, and dress in layers.

Photography Disclosure

Portions of this event may be videotaped and photographed by the conference and/or the media. By attending this conference, you accept the possibility that you may be videotaped or photographed.

Internet Kiosk Computer Desk

One (1) complimentary Internet Kiosk computer desk will be located near the IMPS Registration Desk at the Renaissance Hotel. Attendees and/or their guests of the IMPS 2016 conference are welcome to use this computer for items such as checking email and flight information. (The use of this computer is on a first-come, first-served basis. Please limit your use to 10-15-minutes if other attendees are waiting.)

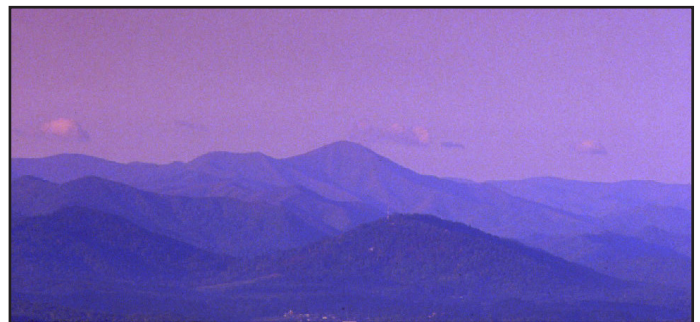
Thumb Drives containing the IMPS 2016 Program and Abstract Book

The Society has placed the IMPS 2016 program book and abstract book on several thumb drives for temporary use on site. Thumb drives for attendee use will be located at the Internet Kiosk Computer Desk and/or at the IMPS Registration Desk to download to your personal computer. (If you need additional assistance, please contact the Registration team located in the Grand Ballroom Foyer area of the Renaissance Hotel.)

IMPS 2016 Mobile APP

New this year, the Psychometric Society has a conference mobile app for IMPS 2016 Annual Meeting. Download the IMPS mobile app from the iTunes Store or Google Play—search for IMPS 2016. Plan to download the app before you travel to the meeting site. Please be aware of any additional data charges. Access the program, abstracts, and more! Don't forget to register under the Activity Stream, and share your conference pictures during the week.

We sincerely hope you have a wonderful visit to Asheville, North Carolina. Thank you for joining us at IMPS 2016!



Photos courtesy of the Asheville CVB

PROGRAM COMMITTEE FOR IMPS 2016

**81st
Meeting
Asheville, NC**

The Program Committee is responsible for the scientific program of the annual meeting of the Psychometric Society. Its duties include inviting speakers, short-course presenters, chairs, and organizers of invited sessions; reviewing submitted abstracts and proposals for symposia; designing the program; and providing advice and feedback on the program and abstract books. According to the bylaws, the president is the chair of the Program Committee and the members are the Immediate Past President, President-Elect, Secretary, four Regular Members, and any number of Adjunct Members. Two Regular Members of the Program Committee are appointed by the President every year to serve for two years. In addition, the President may appoint, for a term of up to one year each, any number of Adjunct Members.

Chair

Terry Ackerman, University of North Carolina, Greensboro, USA

Members

Immediate Past President

Sophia Rabe-Hesketh, University of California, Berkeley

President-Elect

Anders Skrondal, Norwegian Institute of Public Health, Oslo, Norway

Secretary

Luz Bay, The College Board, Newtown, PA, USA

Regular Members (2016-2017)

Daniel Bolt, University of Wisconsin, Madison, USA

Dave Thissen, University of North Carolina-Chapel Hill, USA

Regular Members (2015-2016)

Paul De Boeck, The Ohio State University, Columbus, USA

Klaas Sijtsma, Tilburg University, The Netherlands

Adjunct Members (2016)

Jimmy de la Torre, The University of Hong Kong, China

Irini Moustaki, London School of Economics and Political Science, UK

Wen Chung Wang, The Hong Kong Institute of Education

Carolyn Anderson, University of Illinois, USA

Thank you IMPS 2016 Volunteers

Avent, Cherie
Baker, Kathryn
Bukhari, Nurliyana
Cavanaugh, Austin
Christman, Mandy
Davis, James
Fu, Yanyan
Hargrove, Shureka
Long, Justin
Naumenko, Oksana
Ozberk, Eren Halil
Ozberk, Elif Bengi Unsal
Martin, Alexandra (Lexi)
Patton, Elizabeth (Bess)
Qunbar, Saed
Strachan, Tyler
Thomas Pitts, Robyn
Zemaitis, Julianne
Zhan, Fei

All volunteers are from the Educational Research Methodology Department (University North Carolina, Greensboro, USA).

For more information about the Psychometric Society or membership, contact the Psychometric Society Association Management Company:

The Rees Group, Inc.
2424 American Lane
Madison, WI 53704
Telephone: 608-268-4712
Fax: 608-443-2474
Email: info@psychometricsociety.org

**IMPS
2016**

THANK YOU SPONSORS

GMAC[®]

GRADUATE MANAGEMENT
ADMISSION COUNCIL

LSAC[®]



PACIFIC METRICS[™]
CORPORATION



Listening. Learning. Leading.[®]

ACT[®]

eMetric

STATA[®]



Springer

Mplus[®]

